

THE BRITISH WHITE CATTLE
SOCIETY'S
HERD BOOK

VOLUME XV.

1946

Printed by :

W. E. BAXTER LTD., PRINTERS, 34 AND 35, HIGH STREET.

CONTENTS

| | PAGE |
|---|------|
| PRESIDENT, OFFICERS, ETC. | 7 |
| LIST OF OFFICIAL JUDGES | 9 |
| NAMES AND ADDRESSES OF MEMBERS | 11 |
| PREFACE | 13 |
| REGISTER | 15 |
| PREFIXES GRANTED BY THE SOCIETY | 53 |
| TRANSFERS | 55 |
| INDEX | 58 |
| CONSTITUTION, RULES AND BYE-LAWS | 59 |
| SHOW RULES AND STANDARD | 63 |
| GRADING-UP REGISTER | 66 |

THE BRITISH WHITE CATTLE SOCIETY

President :
THE DUKE OF HAMILTON.

Vice-President :
THE LORD DYNEVOR.

Council :

| | |
|--------------------|-----------------------------------|
| MISS W. ALEXANDER. | CAPTAIN H. J. CATOR, M.C. |
| T. C. ASKEW. | JAMES A. FARMER. |
| C. R. BIRKBECK. | MRS. QUINTIN E. GURNEY. |
| WALTER BUXTON. | BRIG.-GEN. K. KINCAID SMITH, C.B. |

Executive Committee :

| | |
|-------------------------|--------------------------------|
| C. R. BIRKBECK. | CAPTAIN H. J. CATOR, M.C. |
| MRS. QUINTIN E. GURNEY. | LT.-COLONEL QUINTIN E. GURNEY. |

Hon Treasurer :
LT.-COLONEL QUINTIN E. GURNEY.

Hon. Secretary :
J. P. HASLAM.

THE BRITISH WHITE CATTLE SOCIETY

LIST OF OFFICIAL JUDGES

Askew, T. C., Frog's Hall, Takeley, Bishops Stortford, Herts.

Alexander, Miss W., Faygate Wood, Faygate, Sussex.

Birkbeck, C. R., Estate Office, Cottishall, Norwich, Norfolk.

Cator, Captain H. J., M.C., Ranworth Hall, Norwich, Norfolk.

Cubitt, Colonel R. G., Honing Estate Office, Worstead, Norwich.

Gurney, Mrs. Quintin E., Bawdeswell Hall, Dereham, Norfolk.

Gurney, Lt.-Col. Quintin E., Bawdeswell Hall, Dereham, Norfolk.

Nixon, W., Great Pinley, Claverdon, Warwick.

THE BRITISH WHITE CATTLE SOCIETY

LIST OF MEMBERS

- Alexander, Miss W., Faygate Wood, Faygate, Sussex.
Askew, T. C., Frog's Hall, Takeley, Bishop's Stortford, Herts.
Assheton-Smith, Sir Michael, Bart., Vaynol Park, Bangor, N. Wales.
Baillieu, Miss V., Higher Trayne Farm, nr. Ilfracombe, Devon.
Barr, Miss H. I. H., Moorside, Tilford, Surrey.
Bedford, His Grace The Duke of, Woburn Abbey, Bletchley, Bucks.
Birkbeck, C. R., Estate Office, Cottishall, Norwich, Norfolk.
Buxton, Walter, Bolwick, Marsham, Norwich, Norfolk.
Cator, Captain H. J., M.C., Ranworth Hall, Norwich, Norfolk.
Ducker, N. B., Littlestoke Manor, North Stoke, Oxford.
Dynevor, The Lord, Dynevor Castle, Llandilo, Carmarthenshire.
Emerton, J. G., Barracks Farm, Emerton Road, Felcham, Leatherhead.
Essex Agricultural Society (Secretary, Miss M. Fairhead), Writtle Green, nr. Chelmsford, Essex.
Farmer, James A., Stumbleholme Farm, Ifield, Crawley, Sussex.
Gurney, Lt. A. J., Bawdeswell Hall, East Dereham, Norfolk.
Gurney, Capt. R., Hall Farm, Bawdeswell, Norfolk.
Gurney, Mrs. Quintin E., Bawdeswell Hall, East Dereham, Norfolk.
Gurney, Lt.-Col. Quintin E., Bawdeswell Hall, East Dereham, Norfolk.
Hamilton, Her Grace The Duchess of, Hamilton Palace, Lanarkshire.
Hamilton, His Grace The Duke of, Hamilton Palace, Lanarkshire.
Haslam, John P., Matcott, Sutcombe, Holsworthy, Devon.
Kincaid Smith, Brig.-Gen. K., C.B., C.M.G., D.S.O., St. Osyth Priory, Clacton-on-Sea, Essex.
Lancaster, Colonel C. G., M.P., Kelmarsh Hall, Northampton.
St. John, Major, Slinfold Lodge, Slinfold, Sussex.
Thornton, John, Hobson & Co., Victoria House, Southampton Row, London, W.C.1.
Wingfield, Sir Anthony H., Ampthill House, Ampthill, Bedfordshire.

PREFACE

It is regretted that it has been impossible to compile this volume earlier, due to a change in secretaryship, and other contributory causes.

To avoid further delay, the Census of Herds has had to be omitted.

An apology is extended to all members.

J. P. HASLAM.

Register of Horned Herds

THE CHARTLEY HERD (at Woburn)

Owner—THE DUKE OF BEDFORD,

Woburn Abbey, Bletchley.

COWS.

WOBURN BUCKINGHAM 91st 3724.

White with black marks, calved March 28th, 1945; breeder, The Duke of Bedford;

Sire, Woburn Pykert 15th 823.

Dam, Woburn Buckingham 85th 3318.

WOBURN BUCKINGHAM 92nd 3726.

White with black marks, calved April 1st, 1945; breeder, The Duke of Bedford;

Sire, Woburn Prince 1st 735.

Dam, Woburn Buckingham 80th 3108.

WOBURN BUCKINGHAM 93rd 3728.

White with black marks, calved April 16th, 1946; breeder, The Duke of Bedford;

Sire, Woburn Pykent 15th 823.

Dam, Woburn Buckingham 85th 3318.

WOBURN PYAR 5th 3730.

White with black marks, calved March 16th, 1945; breeder, The Duke of Bedford;

Sire, Woburn Prince 1st 735.

Dam, Woburn Pyar 3rd 2380.

WOBURN PYAR 6th 3732.

White with black marks, calved May 13th, 1946; breeder, The Duke of Bedford;

Sire, Woburn Prince 1st 735.

Dam, Woburn Pyar 3rd 2380.

WOBURN PYAURA 11th 3734.

White with black marks, calved March 11th, 1945; breeder, The Duke of Bedford;

Sire, Woburn Pykent 15th 823.

Dam, Woburn Pyaura 8th 3330.

WOBURN PYAURA 12th 3736.

White with black marks, calved March 22nd, 1945; breeder, The Duke of Bedford;

Sire, Woburn Pykent 15th 823.

Dam, Woburn Pyaura 7th 3328.

WOBURN PYAURA 13th 3738.

White with black marks, calved May 13th, 1946; breeder, The Duke of Bedford;

Sire, Woburn Pykent 15th 823.

Dam, Woburn Pyaura 7th 3328.

WOBURN ROSE 2nd 3740.

White with black marks, calved March 30th, 1945; breeder, The Duke of Bedford;

Sire, Woburn Pykent 15th 823.

Dam, Woburn Rose 1st 3114.

Register of Polled Herds

THE BAWDESWELL HERD

Owner—LIEUT.-COLONEL QUINTIN E. GURNEY,

Bawdeswell Hall, Norfolk.

BULLS.

BAWDESWELL BLACKCOCK 883.

White with black points, calved March 7th, 1946; breeder, Lieut.-Colonel Quintin E. Gurney;

Sire, Bawdeswell Greatheart 835.

Dam, Bawdeswell Black Diamond 2396.

BAWDESWELL BLACK EARL 885.

White with black points, calved January 28th, 1945; breeder, Lieut.-Colonel Quintin E. Gurney;

Sire, Bawdeswell Greatheart 835.

Dam, Bawdeswell Black Cat 3128.

BAWDESWELL BLACK MANDATE 887.

White with black points, calved November 12th, 1945; breeder, Lieut.-Colonel Quintin E. Gurney;

Sire, Bawdeswell Greatheart 835.

Dam, Bawdeswell Blackthorn 3336.

BAWDESWELL CADMIUM 889.

White with black points, calved December 29th, 1945; breeder, Lieut.-Colonel Quintin E. Gurney;

Sire, Bawdeswell Greatheart 835.

Dam, Bawdeswell Cynic 3152.

BAWDESWELL CALIPH 891.

White with black marks, calved May 15th, 1946; breeder, Lieut.-Colonel Quintin E. Gurney;

Sire, Bolwick Demon 869.

Dam, Bawdeswell Chronie 11th 3352.

BAWDESWELL CARLOS 893.

White with black points, calved March 21st, 1946; breeder, Lieut.-Colonel Quintin E. Gurney;

Sire, Bawdeswell Black Caesar 827.

Dam, Bawdeswell Cranberry 3146.

BAWDESWELL COUNT 4th 895.

White with black marks, calved October 30th, 1945; breeder, Lieut.-Colonel Quintin E. Gurney;

Sire, Bawdeswell Greatheart 835.

Dam, Bawdeswell Chromo 3138.

BAWDESWELL DAWN PRINCE 897.

White with black points, calved October 23rd, 1945; breeder, Lieut.-Colonel Quintin E. Gurney;

Sire, Kelmarsh Prince 3rd 847.

Dam, Bawdeswell Daybreak 3364.

BAWDESWELL DRAGON 899.

White with black points, calved February 16th, 1945; breeder, Lieut.-Colonel Quintin E. Gurney;

Sire, Kelmarsh Prince 3rd 847.

Dam, Bawdeswell Dorcas 2926.

BAWDESWELL GOLDEN KING 901.

White with black points, calved April 2nd, 1946; breeder, Lieut.-Colonel Quintin E. Gurney;

Sire, Bawdeswell Greatheart 835.

Dam, Bawdeswell Gold Dust 3374.

BAWDESWELL ION 903.

White with black points, calved December 3rd, 1946; breeder, Lieut.-Colonel Quintin E. Gurney;

Sire, Bawdeswell Greatheart 835.

Dam, Bawdeswell Ibis 2nd 3178.

BAWDESWELL NEPTUNE 2nd 905.

White with black points, calved August 10th, 1946; breeder, Lieut.-Colonel Quintin E. Gurney;

Sire, Bawdeswell Black Dart 861.

Dam, Bawdeswell Nettie 3394.

BAWDESWELL SPINEL 907.

White with black points, calved December 5th, 1942; breeder, Lieut.-Colonel Quintin E. Gurney;

Sire, Bolwick Hermes 539.

Dam, Bawdeswell Spinet 1846.

BAWDESWELL SPRINGER 909.

White with black points, calved October 4th, 1945; breeder, Lieut.-Colonel Quintin E. Gurney;

Sire, Bolwick Demon 869.

Dam, Bawdeswell Spangle 3402.

BAWDESWELL SPRINGTIME 911.

White with black points, calved August 11th, 1946; breeder, Lieut.-Colonel Quintin E. Gurney;

Sire, Bawdeswell Black Dart 861.

Dam, Bawdeswell Spangle 3402.

BAWDESWELL SUNRISE 913.

White with black points, calved March 7th, 1946; breeder, Lieut.-Colonel Quintin E. Gurney;

Sire, Bawdeswell Black Caesar 827.

Dam, Bawdeswell Susie 2964.

COWS.

BAWDESWELL BLACKCHERRY 3742.

White with black points, calved September 27th, 1943; breeder, Lieut.-Colonel Quintin E. Gurney;

Sire, Faygate Pieman 813.

Dam, Bawdeswell Black Diamond 2396.

BAWDESWELL BLACK MARY 3744.

White with black points, calved August 15th, 1943 ; breeder, Lieut.-Colonel Quintin E. Gurney ;

Sire, Kelmarsh Prince 3rd 847.

Dam, Bawdeswell Blackthorn 3336.

BAWDESWELL BLACK QUINCE 3746.

White with black points, calved April 27th, 1946 ; breeder, Lieut.-Colonel Quintin E. Gurney ;

Sire, Bolwick Demon 869.

Dam, Bawdeswell Black Adder 3120.

BAWDESWELL BLACK TOPSY 3748.

White with black points, calved February 14th, 1945 ; breeder, Lieut.-Colonel Quintin E. Gurney ;

Sire, Bawdeswell Greatheart 835.

Dam, Bawdeswell Black Opal 2886.

BAWDESWELL BLACK VELVET 3750.

White with black points, calved October 12th, 1945 ; breeder, Lieut.-Colonel Quintin E. Gurney ;

Sire, Bolwick Demon 869.

Dam, Bawdeswell Black Jet 3338.

BAWDESWELL BOADICEA 5th 3752.

White with black points, calved February 17th, 1945 ; breeder, Lieut.-Colonel Quintin E. Gurney ;

Sire, Bawdeswell Black Caesar 827.

Dam, Bawdeswell Babs 3118.

BAWDESWELL BONNY 2nd 3754.

White with black points, calved February 5th, 1946 ; breeder, Lieut.-Colonel Quintin E. Gurney ;

Sire, Bawdeswell Greatheart 835.

Dam, Bawdeswell Babs 3118.

BAWDESWELL BUTTERMILK 3756.

White with black points, calved December 18th, 1946 ; breeder, Lieut.-Colonel Quintin E. Gurney ;

Sire, Bolwick Demon 869.

Dam, Bawdeswell Buttercup 3340.

BAWDESWELL CAMBRIC 3758.

White with black points, calved July 23rd, 1943 ; breeder, Lieut.-Colonel Quintin E. Gurney ;

Sire, Bolwick Winston 801.

Dam, Bawdeswell Clara 3142.

BAWDESWELL CANDYTUFT 3760.

White with black points, calved February 16th, 1945 ; breeder, Lieut.-Colonel Quintin E. Gurney ;

Sire, Bawdeswell Greatheart 835.

Dam, Bawdeswell Cornflower 2904.

BAWDESWELL CAROLINE 3762.

White with black points, calved January 17th, 1943 ; breeder, Lieut.-Colonel Quintin E. Gurney ;

Sire, Bawdeswell Spinnaker 2nd 761.

Dam, Bawdeswell Cranberry 3146.

BAWDESWELL CATMINT 2nd 3764.

White with black points, calved November 2nd, 1946 ; breeder, Lieut.-Colonel Quintin E. Gurney ;

Sire, Bolwick Demon 869.

Dam, Bawdeswell Catsfoot 3554.

BAWDESWELL CEDAR 3766.

White with black points, calved August 27th, 1943 ; breeder, Lieut.-Colonel Quintin E. Gurney ;

Sire, Bolwick Winston 801.

Dam, Bawdeswell Cotta 2416.

BAWDESWELL CELANDINE 3768.

White with black points, calved August 4th, 1946 ; breeder, Lieut.-
Colonel Quintin E. Gurney ;

Sire, Bawdeswell Greatheart 835.

Dam, Bawdeswell Cotta 2416.

BAWDESWELL CHROMATIC 3770.

White with black points, calved December 15th, 1945 ; breeder,
Lieut.-Colonel Quintin E. Gurney ;

Sire, Bawdeswell Greatheart 835.

Dam, Bawdeswell Cinnamon 2636.

BAWDESWELL COMFREY 2nd 3772.

White with black points, calved August 28th, 1946 ; breeder, Lieut.-
Colonel Quintin E. Gurney ;

Sire, Bolwick Demon 869.

Dam, Bawdeswell Concord 3774.

BAWDESWELL CONCORD 3774.

White with black points, calved August 27th, 1943 ; breeder, Lieut.-
Colonel Quintin E. Gurney ;

Sire, Bolwick Winston 801.

Dam, Bawdeswell Comfrey 2900.

BAWDESWELL CORNCOCKLE 3776.

White with black points, calved April 6th, 1943 ; breeder, Lieut.-
Colonel Quintin E. Gurney ;

Sire, Bawdeswell Spinnaker 2nd 761.

Dam, Bawdeswell Cornrake 2646.

BAWDESWELL COUNTESS 5th 3778.

White with black points, calved October 1st, 1946 ; breeder, Lieut.-
Colonel Quintin E. Gurney ;

Sire, Bawdeswell Greatheart 835.

Dam, Bawdeswell Chromo 3138.

BAWDESWELL CRABTREE 3780.

White with black points, calved October 10th, 1945 ; breeder, Lieut.-
Colonel Quintin E. Gurney ;

Sire, Bawdeswell Black Caesar 827.

Dam, Bawdeswell Congress 2nd 3358.

BAWDESWELL CROWN PRINCESS 3782.

White with black points, calved October 1st, 1943 ; breeder, Lieut.-
Colonel Quintin E. Gurney ;

Sire, Kelmarsh Prince 3rd 847.

Dam, Bawdeswell Canopy 3344.

BAWDESWELL DANCER 3784.

White with black points, calved May 31st, 1943 ; breeder, Lieut.-
Colonel Quintin E. Gurney ;

Sire, Bolwick Hermes 539.

Dam, Bawdeswell Daffy 2656.

BAWDESWELL DARK STAR 3786.

White with black points, calved May 11th, 1945 ; breeder, Lieut.-
Colonel Quintin E. Gurney ;

Sire, Bawdeswell Greatheart 835.

Dam, Bawdeswell Dovetail 3160.

BAWDESWELL DAWN PRINCESS 3788.

White with black points, calved October 7th, 1946 ; breeder, Lieut.-
Colonel Quintin E. Gurney ;

Sire, Bolwick Demon 869.

Dam, Bawdeswell Daybreak 3364.

BAWDESWELL DAYDREAM 3790.

White with black points, calved August 26th, 1946 ; breeder, Lieut.-
Colonel Quintin E. Gurney ;

Sire, Bawdeswell Greatheart 835.

Dam, Bawdeswell Dotterell 2928.

BAWDESWELL DAYSTAR 3792.

White with black points, calved September 27th, 1943 ; breeder,
Lieut.-Colonel Quintin E. Gurney ;

Sire, Faygate Pieman 813.

Dam, Bawdeswell Dotterell 2928.

BAWDESWELL DEWDROP 3794.

White with black points, calved August 15th, 1943 ; breeder, Lieut.-
Colonel Quintin E. Gurney ;

Sire, Bawdeswell Coma 791.

Dam, Bawdeswell Draco 3162.

BAWDESWELL DONSIE 3796.

White with black points, calved March 20th, 1946 ; breeder, Lieut.-
Colonel Quintin E. Gurney ;

Sire, Bolwick Demon 869.

Dam, Bawdeswell Drachma 3366.

BAWDESWELL DROSKY 3798.

White with black points, calved August 3rd, 1943 ; breeder, Lieut.-
Colonel Quintin E. Gurney ;

Sire, Bawdeswell Coma 791.

Dam, Bawdeswell Delphinium 2920.

BAWDESWELL DOVERAY 3800.

White with black points, calved December 3rd, 1945 ; breeder,
Lieut.-Colonel Quintin E. Gurney ;

Sire, Bawdeswell Greatheart 835.

Dam, Bawdeswell Dove 2nd 2426.

BAWDESWELL DROVEREEN 3802.

White with black points, calved October 22nd, 1945 ; breeder, Lieut.-
Colonel Quintin E. Gurney ;

Sire, Bawdeswell Greatheart 835.

Dam, Bawdeswell Delphinium 2920.

BAWDESWELL DUCANE 3804.

White with black points, calved January 17th, 1943 ; breeder, Lieut.-
Colonel Quintin E. Gurney ;

Sire, Bawdeswell Spinnaker 2nd 761.

Dam, Bawdeswell Duchess 3164.

BAWDESWELL DUCELLA 3806.

White with black points, calved September 9th, 1943 ; breeder,
Lieut.-Colonel Quintin E. Gurney ;

Sire, Bolwick Winston 801.

Dam, Bawdeswell Dustbin 2662.

BAWDESWELL DUCHESA 3808.

White with black points, calved March 7th, 1946 ; breeder, Lieut.-
Colonel Quintin E. Gurney ;

Sire, Bolwick Demon 869.

Dam, Bawdeswell Duchess 3164.

BAWDESWELL DUCHIER 3810.

White with black points, calved February 17th, 1945 ; breeder,
Lieut.-Colonel Quintin E. Gurney ;

Sire, Bawdeswell Black Caesar 827.

Dam, Bawdeswell Duchess 3164.

BAWDESWELL DUCHY 3812.

White with black points, calved April 29th, 1940 ; breeder, Lieut.-
Colonel Quintin E. Gurney ;

Sire, Bawdeswell Topknotch 763.

Dam, Bawdeswell Dustbin 2662.

BAWDESWELL DUNLIN 3814.

White with black points, calved September 8th, 1945 ; breeder,
Lieut.-Colonel Quintin E. Gurney ;

Sire, Bolwick Demon 869.

Dam, Bawdeswell Ducane 3804.

BAWDESWELL GAY 3816.

White with black points, calved August 28th, 1943 ; breeder, Lieut.-Colonel Quintin E. Gurney ;

Sire, Kelmarsh Prince 3rd 847.

Dam, Bawdeswell Gonda 3376.

BAWDESWELL GOLDFINCH 3818.

White with black points, calved February 18th, 1946 ; breeder, Lieut.-Colonel Quintin E. Gurney ;

Sire, Bawdeswell Black Caesar 827.

Dam, Bawdeswell Gallardia 2668.

BAWDESWELL GOLDMINE 3820.

White with black points, calved February 27th, 1943 ; breeder, Lieut.-Colonel Quintin E. Gurney ;

Sire, Bawdeswell Spinnaker 2nd 761.

Dam, Bawdeswell Gallardia 2668.

BAWDESWELL GREAT VICTORIA 3822.

White with black points, calved March 8th, 1946 ; breeder, Lieut.-Colonel Quintin E. Gurney ;

Sire, Bawdeswell Black Caesar 827.

Dam, Bawdeswell Greyling 3174.

BAWDESWELL GREAT VICTORY 3824.

White with black points, calved April 10th, 1945 ; breeder, Lieut.-Colonel Quintin E. Gurney ;

Sire, Bawdeswell Greatheart 835.

Dam, Bawdeswell Greyling 3174.

BAWDESWELL GREY LADY 3826.

White with black points, calved September 22nd, 1943 ; breeder, Lieut.-Colonel Quintin E. Gurney ;

Sire, Kelmarsh Prince 3rd 847.

Dam, Bawdeswell Grey Mist 3380.

BAWDESWELL IONE 3828.

White with black points, calved October 19th, 1943 ; breeder, Lieut.-Colonel Quintin E. Gurney ;

Sire, Faygate Pieman 813.

Dam, Bawdeswell Ibis 2nd 3178.

BAWDESWELL IRIS 3830.

White with black points, calved September 5th, 1943 ; breeder, Lieut.-Colonel Quintin E. Gurney ;

Sire, Kelmarsh Prince 3rd 847.

Dam, Bawdeswell Ibis 2nd 3176.

BAWDESWELL MARGERY 3832.

White with black points, calved October 6th, 1943 ; breeder, Lieut.-Colonel Quintin E. Gurney ;

Sire, Faygate Pieman 813.

Dam, Bawdeswell Merrylegs 2944.

BAWDESWELL NANCY 2nd 3834.

White with black points, calved August 19th, 1943 ; breeder, Lieut.-Colonel Quintin E. Gurney ;

Sire, Bawdeswell Coma 791.

Dam, Bawdeswell Nicotine 2950.

BAWDESWELL NANDOO 3836.

White with black points, calved May 21st, 1945 ; breeder, Lieut.-Colonel Quintin E. Gurney ;

Sire, Kelmarsh Prince 3rd 847.

Dam, Bawdeswell Nicotine 2950.

BAWDESWELL NARBOROUGH 3838.

White with black points, calved December 11th, 1946 ; breeder, Lieut.-Colonel Quintin E. Gurney ;

Sire, Bolwick Demon 869.

Dam, Bawdeswell Nancy 2nd 3834.

BAWDESWELL NARCISSUS 3840.

White with black points, calved December 12th, 1945 ; breeder,
Lieut.-Colonel Quintin E. Gurney ;

Sire, Bolwick Demon 869.

Dam, Bawdeswell Nancy 2nd 3834.

BAWDESWELL NETTLE 3842.

White with black points, calved July 11th, 1943 ; breeder, Lieut.-
Colonel Quintin E. Gurney ;

Sire, Bolwick Winston 801.

Dam, Bawdeswell Nellie 2948.

BAWDESWELL NIPPY 3844.

White with black points, calved May 11th, 1946 ; breeder, Lieut.-
Colonel Quintin E. Gurney ;

Sire, Bolwick Demon 869.

Dam, Bawdeswell Norah 3186.

BAWDESWELL SENSATION 3846.

White with black points, calved July 19th, 1946 ; breeder, Lieut.-
Colonel Quintin E. Gurney ;

Sire, Bawdeswell Greatheart 835.

Dam, Bawdeswell Spinnet 3192.

BAWDESWELL SHUTTLE 2nd 3848.

White with black points, calved August 18th, 1944 ; breeder, Lieut.-
Colonel Quintin E. Gurney ;

Sire, Kelmarsh Prince 3rd 847.

Dam, Bawdeswell Spinney 2960.

BAWDESWELL SHUTTLECOCK 3850.

White with black points, calved March 23rd, 1946 ; breeder, Lieut.-
Colonel Quintin E. Gurney ;

Sire, Bawdeswell Black Caesar 827.

Dam, Bawdeswell Spinney 2960.

BAWDESWELL SILVERBELLE 3852.

White with black points, calved December 3rd, 1946 ; breeder, Lieut.-
Colonel Quintin E. Gurney ;

Sire, Bolwick Demon 869.

Dam, Bawdeswell Sendal 3586.

BAWDESWELL SIREN 3854.

White with black points, calved October 30th, 1945 ; breeder, Lieut.-
Colonel Quintin E. Gurney ;

Sire, Bolwick Demon 869.

Dam, Bawdeswell Sundew 3408.

BAWDESWELL SPANIARD 3856.

White with black points, calved February 18th, 1946 ; breeder,
Lieut.-Colonel Quintin E. Gurney ;

Sire, Bolwick Demon 869.

Dam, Bawdeswell Spindle 2690.

BAWDESWELL STAR 3858.

White with black points, calved April 4th, 1943 ; breeder, Lieut.-
Colonel Quintin E. Gurney ;

Sire, Bolwick Winston 801.

Dam, Bawdeswell Spanish 3190.

BAWDESWELL SUNGLEAM 3860.

White with black points, calved January 5th, 1945 ; breeder, Lieut.-
Colonel Quintin E. Gurney ;

Sire, Bawdeswell Black Caesar 827.

Dam, Bawdeswell Susie 2964.

THE BOLWICK HERD

Owners—WALTER BUXTON and C. R. BIRKBECK,
Bolwick, Marsham, Norwich.

BULLS.

BOLWICK JOHN DILL 915.

White with black points, calved January 17th, 1945; breeders,
Buxton & Birkbeck;

Sire, Woodbastwick Junkers 809.

Dam, Bolwick Dabchick 2968.

BOLWICK DRAGON 917.

White with black points, calved October 11th, 1945; breeders,
Buxton & Birkbeck;

Sire, Bolwick Drake 871.

Dam, Bolwick Diadem 2708.

BOLWICK STALWART 919.

White with black points, calved October 3rd, 1945; breeders,
Buxton & Birkbeck;

Sire, Bawdeswell Spinel 907.

Dam, Bolwick Samphire 3444.

BOLWICK WALRUS 921.

White with black points, calved October 3rd, 1946; breeders,
Buxton & Birkbeck;

Sire, Bawdeswell Spinel 907.

Dam, Bolwick Wren 3448.

BOLWICK LAIRD 2nd 935.

White with black points, calved February 4th, 1946; breeders,
Buxton & Birkbeck;

Sire, Bawdeswell Spinel 907.

Dam, Bolwick Lotus 3430.

COWS.

BOLWICK BELL HEATHER 3862.

White with black points, calved January 22nd, 1946 ; breeders,
Buxton & Birkbeck ;
Sire, Bawdeswell Spinel 907.
Dam, Woodbastwick Belinda 3702.

BOLWICK DALLY 3864.

White with black points, calved January 31st, 1946 ; breeders,
Buxton & Birkbeck ;
Sire, Bawdeswell Spinel 907.
Dam, Bolwick Dinky 2976.

BOLWICK DARKSOME 3866.

White with black points, calved December 31st, 1946 ; breeders,
Buxton & Birkbeck ;
Sire, Bolwick Drake 870.
Dam, Bolwick Darky C.6.Gur.

BOLWICK DARKNESS 3868.

White with black points, calved October 29th, 1945 ; breeders,
Buxton & Birkbeck ;
Sire, Bolwick Drake 871.
Dam, Bolwick Dream 3200.

BOLWICK DAYBREAK 3870.

White with black points, calved September 28th, 1945 ; breeders,
Buxton & Birkbeck ;
Sire, Bawdeswell Spinel 907.
Dam, Bolwick Daydream 3418.

BOLWICK DEBUTANTE 3872.

White with black points, calved October 24th, 1945 ; breeders,
Buxton & Birkbeck ;
Sire, Bawdeswell Spinel 907.
Dam, Bolwick Dancer 3416.

BOLWICK DELILAH 2nd 3874.

White with black points, calved February 6th, 1946 ; breeders,
Buxton & Birkbeck ;
Sire, Bawdeswell Spinel 907.
Dam, Bolwick Daisy 3414.

BOLWICK DIANA 2nd 3876.

White with black points, calved February 13th, 1946 ; breeders,
Buxton & Birkbeck ;
Sire, Bolwick Drake 871.
Dam, Bolwick Dione 3198.

BOLWICK DISTAFF 3878.

White with black points, calved June 15th, 1945 ; breeders, Buxton
& Birkbeck ;
Sire, Bawdeswell Spinel 907.
Dam, Bolwick Delia 3420.

BOLWICK DOMESTIC 3880.

White with black points, calved October 11th, 1946 ; breeders,
Buxton & Birkbeck ;
Sire, Bawdeswell Spinel 907.
Dam, Bolwick Dorcas 3426.

BOLWICK DORCIE 3882.

White with black points, calved September 26th, 1945 ; breeders,
Buxton & Birkbeck ;
Sire, Bawdeswell Spinel 907.
Dam, Bolwick Darkie C.6.Gur.

BOLWICK DOTTEREL 3884.

White with black points, calved January 5th, 1945 ; breeders, Buxton
& Birkbeck ;
Sire, Woodbastwick Junker 809.
Dam, Bolwick Dunlin 3202.

BOLWICK DROLE 3886.

White with black points, calved February 26th, 1945 ; breeders,
Buxton & Birkbeck ;

Sire, Kelmarsh Prince 3rd 847.

Dam, Bolwick Dinky 2976.

BOLWICK DUENNA 3888.

White with black points, calved November 30th, 1945 ; breeders,
Buxton & Birkbeck ;

Sire, Bawdeswell Spinel 907.

Dam, Bolwick Dorcas 3426.

BOLWICK DUMPY 3890.

White with black points, calved February 10th, 1945 ; breeders,
Buxton & Birkbeck ;

Sire, Woodbastwick Junker 809.

Dam, Woodbastwick Dwarf.

BOLWICK JUNO 3892.

White with black points, calved February 2nd, 1946 ; breeders,
Buxton & Birkbeck ;

Sire, Bawdeswell Spinel 907.

Dam, Woodbastwick Juliana 3710.

BOLWICK PAINTED LADY 3894.

White with black points, calved January 23rd, 1945 ; breeders,
Buxton & Birkbeck ;

Sire, Kelmarsh Prince 3rd 847.

Dam, Bolwick Peach 3436.

BOLWICK POMANDA 3896.

White with black points, calved September 30th, 1946 ; breeders,
Buxton & Birkbeck ;

Sire, Bawdeswell Spinel 907.

Dam, Bolwick Pomona 3618.

BOLWICK SEAKALE 3898.

White with black points, calved October 3rd, 1945 ; breeders,
Buxton & Birkbeck ;

Sire, Bawdeswell Spinel 907.

Dam, Bolwick Salsify 3rd 3442.

BOLWICK WALLABY 3900.

White with black points, calved July 15th, 1945 ; breeders, Buxton
& Birkbeck ;

Sire, Bolwick Drake 871.

Dam, Bolwick Walfin 3216.

BOLWICK WENCH 3902.

White with black points, calved July 15th, 1945 ; breeders, Buxton
& Birkbeck ;

Sire, Bolwick Drake 871.

Dam, Bolwick Walfin 3216.

BOLWICK WHINCHAT 3904.

White with black points, calved September 26th, 1945 ; breeders,
Buxton & Birkbeck ;

Sire, Bawdeswell Spinel 907.

Dam, Bolwick Wren 3448.

THE DRUID HERD

Owner—J. P. HASLAM,

Matcott, Sutcombe, Holsworthy, Devon.

BULL.

DRUID OSIRIS 923.

White with black points, calved October 8th, 1946; breeder, J. P. Haslam;

Sire, Bolwick Demon 869.

Dam, Bawdeswell Iris 3830.

COWS.

DRUID CEDILLA 3906.

White with black points, calved August 10th, 1946; breeder, J. P. Haslam;

Sire, Bolwick Demon 869.

Dam, Bawdeswell Cedar 3766.

DRUID DAWN 3908.

White with black points, calved July 29th, 1946; breeder, J. P. Haslam;

Sire, Bolwick Demon 869.

Dam, Bawdeswell Daystar 3792.

DRUID FIRECREST 3910.

White with black points, calved September 9th, 1946; breeder, J. P. Haslam;

Sire, Bolwick Demon 869.

Dam, Bawdeswell Dragon Girl 3570.

DRUID GRISETTE 3912.

White with black points, calved August 8th, 1946 ; breeder, J. P. Haslam ;

Sire, Bolwick Demon 869.

Dam, Bawdeswell Gay 3816.

DRUID ICENE 3914.

White with black points, calved August 3rd, 1946 ; breeder, J. P. Haslam ;

Sire, Bolwick Demon 869.

Dam, Bawdeswell Boadicea 4th 3552.

DRUID SPY 3916.

White with black points, calved July 26th, 1946 ; breeder, J. P. Haslam ;

Sire, Bolwick Demon 869.

Dam, Bawdeswell Crabapple 3560.

DRUID THISTLEDOWN 3918.

White with black points, calved July 30th, 1946 ; breeder, J. P. Haslam ;

Sire, Bolwick Demon 869.

Dam, Bawdeswell Blackthistle 3550.

THE FAYGATE HERD

Owner—MISS ALEXANDER,

Faygate Wood, Faygate, Sussex.

BULLS.**FAYGATE CROWN PRINCE 925.**

White with black points, calved September 13th, 1946 ; breeder, Miss Alexander ;

Sire, Faygate Last Straw 875.

Dam, Bawdeswell Crown Princess 3782.

FAYGATE ELDERBERRY 927.

White with black points, calved January 8th, 1946 ; breeder, Miss Alexander ;

Sire, Faygate Cranberry 843.

Dam, Faygate Cape Gooseberry 3638.

COWS.**FAYGATE BLACK DAMSON 3920.**

White with black points, calved August 19th, 1946 ; breeder, Miss Alexander ;

Sire, Bawdeswell Citizen 2nd 829.

Dam, Bawdeswell Black Damson 3334.

FAYGATE CHEERLESS 3922.

White with black points, calved February 2nd, 1947 ; breeder, Miss Alexander ;

Sire, Faygate Last Straw 875.

Dam, Faygate Cheerful 3634.

FAYGATE CYCLONE 3924.

White with black points, calved December 23rd, 1946; breeder,
Miss Alexander;

Sire, Bawdeswell Citizen 2nd 829.

Dam, Bawdeswell Cloudet 3354.

FAYGATE INDIAN CORN 3926.

White with black points, calved September 22nd, 1946; breeder,
Miss Alexander;

Sire, Faygate Last Straw 875.

Dam, Faygate Maize 3640.

THE HEVINGHAM HERD

Owner—C. R. BIRKBECK,

Rippon Hall, Hevingham, Norfolk.

BULL.**HEVINGHAM DAYSTAR 929.**

White with black points, calved May 24th, 1946; breeder, C. R.
Birkbeck;

Sire, Bawdeswell Spinel 907.

Dam, Bolwick Daylight 3196.

COWS.**HEVINGHAM PENNINE 3928.**

White with black points, calved January 1st, 1946; breeder, C. R.
Birkbeck;

Sire, Bawdeswell Spinel 907.

Dam, Bolwick Penelope 3438.

HEVINGHAM PLATINUM 3930.

White with black points, calved November 24th, 1946; breeder,
C. R. Birkbeck;

Sire, Bawdeswell Spinel 907.

Dam, Bolwick Pearl 3612.

HEVINGHAM SNOW GOOSE 3932.

White with black points, calved February 12th, 1946; breeder,
C. R. Birkbeck;

Sire, Bawdeswell Spinel 907.

Dam, Woodbastwick Snowberry 3520.

HEVINGHAM WILFUL 3934.

White with black points, calved December 25th, 1945; breeder,
C. R. Birkbeck;

Sire, Bawdeswell Spinel 907.

Dam, Bolwick Wimple 3446.

THE KELMARSH HERD

Owner—COLONEL C. G. LANCASTER, M.P.,

Kelmarsh Hall, Northampton.

BULLS.

KELMARSH PENO 931.

White with black points, calved July 5th, 1945; breeder, Colonel
C. G. Lancaster;

Sire, Bawdeswell Coma 791.

Dam, Kelmarsh Pansy 3234.

KELMARSH PIEROT 933.

White with black points, calved May 27th, 1945; breeder, Colonel
C. G. Lancaster;

Sire, Kelmarsh Cayzel 803.

Dam, Kelmarsh Poppy 3240.

COWS.

KELMARSH ELLA 12th 3936.

White with black points, calved February 18th, 1945; breeder,
Colonel C. G. Lancaster;

Sire, Bawdeswell Como 791.

Dam, Kelmarsh Ella 5th 3014.

KELMARSH ELLA 13th 3938.

White with black points, calved August 11th, 1945; breeder,
Colonel C. G. Lancaster;

Sire, Kelmarsh Cayzel 803.

Dam, Kelmarsh Ella 10th 3468.

KELMARSH FUCHSIA 13th 3940.

White with black points, calved March 21st, 1945 ; breeder, Colonel C. G. Lancaster ;

Sire, Kelmarsh Cayzel 803.

Dam, Kelmarsh Fuchsia 11th 3470.

KELMARSH FUCHSIA 14th 3942.

White with black points, calved December 22nd, 1945 ; breeder, Colonel C. G. Lancaster ;

Sire, Kelmarsh Cayzel 803.

Dam, Kelmarsh Fuchsia X. 3228.

KELMARSH NORA 4th 3944.

White with black points, calved February 7th, 1945 ; breeder, Colonel C. G. Lancaster ;

Sire, Bawdeswell Coma 791.

Dam, Kelmarsh Nora 2nd 3230.

KELMARSH NORA 5th 3946.

White with black points, calved June 20th, 1945 ; breeder, Colonel C. G. Lancaster ;

Sire, Kelmarsh Cayzel 803.

Dam, Kelmarsh Nora 3rd 3472.

KELMARSH PANSY 23rd 3948.

White with black points, calved February 10th, 1945 ; breeder, Colonel C. G. Lancaster ;

Sire, Bawdeswell Coma 791.

Dam, Kelmarsh Pansy 10th 3232.

KELMARSH PANSY 24th 3950.

White with black points, calved March 25th, 1945 ; breeder, Colonel C. G. Lancaster ;

Sire, Bawdeswell Coma 791.

Dam, Bawdeswell Pansy 14th 3474.

KELMARSH PANSY 25th 3952.

White with black points, calved September 13th, 1945 ; breeder, Colonel C. G. Lancaster ;

Sire, Bawdeswell Coma 791.

Dam, Kelmarsh Pansy 16th 3478.

KELMARSH POPPY 10th 3954.

White with black points, calved March 19th, 1945 ; breeder, Colonel C. G. Lancaster ;

Sire, Bawdeswell Coma 791.

Dam, Kelmarsh Poppy 7th 3480.

KELMARSH POPPY 11th 3956.

White with black points, calved March 25th, 1945 ; breeder, Colonel C. G. Lancaster ;

Sire, Bawdeswell Coma 791.

Dam, Kelmarsh Poppy 3rd 2748.

KELMARSH PRIMROSE 18th 3958.

White with black points, calved February 13th, 1945 ; breeder, Colonel C. G. Lancaster ;

Sire, Bawdeswell Coma 791.

Dam, Kelmarsh Primrose 2nd 3244.

KELMARSH PRIMROSE 19th 3960.

White with black points, calved March 21st, 1945 ; breeder, Colonel C. G. Lancaster ;

Sire, Kelmarsh Cayzel 803.

Dam, Kelmarsh Primrose 12th 3246.

KELMARSH PRIMROSE 20th 3962.

White with black points, calved May 24th, 1945 ; breeder, Colonel C. G. Lancaster ;

Sire, Bawdeswell Coma 791.

Dam, Kelmarsh Primrose 13th 3484.

KELMARSH PRIMTOR 3964.

White with black points, calved December 25th, 1945; breeder,
Colonel C. G. Lancaster;

Sire, Kelmarsh Cayzel 803.

Dam, Kelmarsh Primrose 14th 3486.

KELMARSH SNOWDRIFT 3966.

White with black points, calved December 20th, 1945; breeder,
Colonel C. G. Lancaster;

Sire, Kelmarsh Cayzel 803.

Dam, Kelmarsh Snowdrop 21st 3492.

KELMARSH TOPSY 6th 3968.

White with black points, calved March 22nd, 1945; breeder, Colonel
C. G. Lancaster;

Sire, Kelmarsh Cayzel 803.

Dam, Kelmarsh Topsy 3rd 3494.

KELMARSH TOPSY 7th 3970.

White with black points, calved March 22nd, 1945; breeder, Colonel
C. G. Lancaster;

Sire, Bawdeswell Coma 791.

Dam, Kelmarsh Topsy 4th 3496.

THE STUMBLEHOLME HERD

Owner—JAMES FARMER,

Stumbleholme Farm, Ifield.

COW.

STUMBLEHOLME FALINE 3972.

White with black points, calved April 7th, 1943; breeder, James
Farmer;

Sire, Stumbleholme Astronomer Royal 715.

Dam, Bawdeswell Sunset 2696.

THE ST. OSYTH HERD

Owner—BRIGADIER-GENERAL K. KINCAID SMITH,
C.B., C.M.G., D.S.O.

St. Osyth Priory, Clacton-on-Sea.

COWS.

ST. OSYTH VERA 3974.

White with black points, calved March 6th, 1945; breeder, Brig.-
Gen. K. Kincaid Smith;

Sire, St. Osyth Sultan 849.

Dam, St. Osyth Larkspur 2496.

ST. OSYTH VESTA 3976.

White with black points, calved March 8th, 1945; breeder, Brig.-
Gen. K. Kincaid Smith;

Sire, St. Osyth Sultan 849.

Dam, St. Osyth Sally 3498.

ST. OSYTH VIOLET 3978.

White with black points, calved January 26th, 1945; breeder,
Brig.-Gen. K. Kincaid Smith;

Sire, St. Osyth Sultan 849.

Dam, St. Osyth Queenie 3042.

ST. OSYTH VIRGINIA 3980.

White with black points, calved April 30th, 1945; breeder, Brig.-
Gen. K. Kincaid Smith;

Sire, St. Osyth Sultan 849.

Dam, St. Osyth Nancy 2760.

ST. OSYTH VISTA 3982.

White with black points, calved July 6th, 1945; breeder, Brig.-Gen.
K. Kincaid Smith;

Sire, St. Osyth Sultan 849.

Dam, St. Osyth Quality 3040.

ST. OSYTH WALLFLOWER 3984.

White with black points, calved February 2nd, 1946; breeder,
Brig.-Gen. K. Kincaid Smith;

Sire, St. Osyth Sultan 849.

Dam, St. Osyth Utility 3698.

ST. OSYTH WALNUT 3986.

White with black points, calved February 17th, 1946; breeder,
Brig.-Gen. K. Kincaid Smith;

Sire, St. Osyth Sultan 849.

Dam, St. Osyth Theresa 3692.

ST. OSYTH WINIFRED 3988.

White with black points, calved April 3rd, 1946; breeder, Brig.-Gen.
K. Kincaid Smith;

Sire, St. Osyth Sultan 849.

Dam, St. Osyth Tess 3690.

ST. OSYTH WINNIE 3990.

White with black points, calved March 2nd, 1946; breeder, Brig.-
Gen. K. Kincaid Smith;

Sire, St. Osyth Sultan 849.

Dam, St. Osyth Molly 2516.

ST. OSYTH WINSOME 3992.

White with black points, calved April 5th, 1946; breeder, Brig.-Gen.
K. Kincaid Smith;

Sire, St. Osyth Sultan 849.

Dam, St. Osyth Susan 3500.

Grading-up Register

of animals partly of Herd Book registered British White blood.

THE WOODBASTWICK HERD

Owner—COLONEL H. J. CATOR,

The Priory, Ranworth, Norwich, Norfolk.

SECTION A.**COWS.****WOODBASTWICK BEGONIA A.64 GUR.**

White with black points, calved February 5th, 1946; breeder,
Colonel H. J. Cator;

Sire, Broadhooks Chief (*Shorthorn*).

Dam, Woodbastwick Begum 4th 3508. ✓

WOODBASTWICK BIRDWOOD A.66 GUR.

White with black points, calved January 17th, 1946; breeder,
Colonel H. J. Cator;

Sire, Broadhooks Chief (*Shorthorn*).

Dam, Woodbastwick Birdlime 2nd 2520. ✓

WOODBASTWICK JUSTLY A.68 GUR.

White with black points, calved October 4th, 1945; breeder, Colonel
H. J. Cator;

Sire, Broadhooks Chief (*Shorthorn*).

Dam, Woodbastwick Justice 3278. ✓

WOODBASTWICK PEARL A.70 GUR.

White with black points, calved March 13th, 1946; breeder, Colonel
H. J. Cator;

Sire, Broadhooks Chief (*Shorthorn*).

Dam, Woodbastwick Gem 3708. ✓

PRIMROSE A.72 GUR.

White with black points, calved October 13th, 1944; breeder,
Mr. Harrison, Hall Farm, Trimmingham.

**PREFIXES GRANTED BY THE
BRITISH WHITE CATTLE SOCIETY.**

| | | | |
|--------------|-----|-----|---|
| Amphill | ... | ... | Wingfield, Sir Anthony. |
| Bawdeswell | ... | ... | Gurney, Lieut.-Colonel Q. E. |
| Bolwick | ... | ... | Buxton, Walter and Birkbeck, C. R. |
| Cadzow | ... | ... | Hamilton, His Grace The Duke of |
| Chillingham | ... | ... | Tankerville, The Earl of |
| Druid | ... | ... | Haslam, J. P. |
| Dynevor | ... | ... | Dynevor, The Lord. |
| Emery Down | ... | ... | Trench, D. P. |
| Faygate | ... | ... | Alexander, Miss W. |
| Hevingham | ... | ... | Birkbeck, C. R. |
| Kelmarsh | ... | ... | Lancaster, Capt. C. G., M.P. |
| Littlestoke | ... | ... | Ducker, N. B. |
| Ranworth | ... | ... | Cator, Capt. H. J., M.C. |
| St. Osyth | ... | ... | Kincaid Smith, Brig.-Gen. K., C.B., C.M.G., D.S.O. |
| Solva | ... | ... | Howell, Capt. J. H., M.C. |
| Stumbleholme | ... | ... | Farmer, J. A. |
| Takeley | ... | ... | Askew, T. C. |
| Vaynol | ... | ... | Assheton-Smith, Sir Michael, Bart. |
| Woburn | ... | ... | Bedford, The Duke of, K.G. |
| Woodbastwick | ... | ... | Cator, Colonel H. J. |

TRANSFERS

POLLED.

BULLS.

- Bawdeswell Black Dart 861, from Lt.-Col. Q. E. Gurney to Buxton & Birkbeck, December 1945.
- Bawdeswell Black Earl 885, from Lt.-Col. Q. E. Gurney to Col. C. G. Lancaster, December 1945.
- Bawdeswell Count 4th 895, from Lt.-Col. Q. E. Gurney to John P. Haslam, December 21st, 1945.
- Bolwick John Dill 915, from Messrs. Buxton & Birkbeck to John P. Haslam, February 2nd, 1946.
- Bolwick Laird 2nd 935, from C. R. Birkbeck to Col. H. J. Cator, M.C., February 1946.
- Faygate Crown Prince 925, from Miss Alexander to Lt.-Col. Q. E. Gurney, September 1946.
- Kelmarsh Peno 931, from Col. C. G. Lancaster to Lt.-Col. Q. E. Gurney, January 1946.
- Kelmarsh Pierot 933, from Col. C. G. Lancaster to Lt.-Col. Q. E. Gurney, December 1945.
- Woodbastwick Peter 937, from Col. H. J. Cator to Lt.-Col. Q. E. Gurney, August 1944.

Cows.

- Bawdeswell Black Cherry 3742, from Lt.-Col. Q. E. Gurney to John P. Haslam, December 21st, 1945.
- Bawdeswell Black Damson 3334, from Lt.-Col. Q. E. Gurney to Miss Alexander, September 1945.
- Bawdeswell Black Ella 3546, from Lt.-Col. Q. E. Gurney to John P. Haslam, December 21st, 1945.
- Bawdeswell Black Mary 3744, from Lt.-Col. Q. E. Gurney to John P. Haslam, December 21st, 1945.
- Bawdeswell Black Thistle 3550, from Lt.-Col. Q. E. Gurney to John P. Haslam, December 21st, 1945.

- Bawdeswell Boadicea 4th 3552, from Lt.-Col. Q. E. Gurney to John P. Haslam, December 21st, 1945.
- Bawdeswell Cambric 3758, from Lt.-Col. Q. E. Gurney to John P. Haslam, December 21st, 1945.
- Bawdeswell Caroline 3762, from Lt.-Col. Q. E. Gurney to Miss Alexander, September 1945.
- Bawdeswell Cedar 3766, from Lt.-Col. Q. E. Gurney to John P. Haslam, December 21st, 1945.
- Bawdeswell Countess 3558, from Lt.-Col. Q. E. Gurney to Miss Barr, 1944.
- Bawdeswell Crab Apple 3560, from Lt.-Col. Q. E. Gurney to John P. Haslam, December 21st, 1945.
- Bawdeswell Crown Princess 3782, from Lt.-Col. Q. E. Gurney to Miss Alexander, October 1943.
- Bawdeswell Cutie 3564, from Lt.-Col. Q. E. Gurney to John P. Haslam, December 21st, 1945.
- Bawdeswell Day Star 3792, from Lt.-Col. Q. E. Gurney to John P. Haslam, December 21st, 1945.
- Bawdeswell Dewdrop 3794, from Lt.-Col. Q. E. Gurney to John P. Haslam, December 21st, 1945.
- Bawdeswell Dragon Girl 3570, from Lt.-Col. Q. E. Gurney to John P. Haslam, December 21st, 1945.
- Bawdeswell Drosky 3798, from Lt.-Col. Q. E. Gurney to Miss Barr, 1944.
- Bawdeswell Gay 3816, from Lt.-Col. Q. E. Gurney to John P. Haslam, December 21st, 1945.
- Bawdeswell Goldfish 3578, from Lt.-Col. Q. E. Gurney to John P. Haslam, December 21st, 1945.
- Bawdeswell Grey Lady 3826, from Lt.-Col. Q. E. Gurney to John P. Haslam, December 21st, 1945.
- Bawdeswell Ione 3828, from Lt.-Col. Q. E. Gurney to John P. Haslam, December 21st, 1945.
- Bawdeswell Iris 3830, from Lt.-Col. Q. E. Gurney to John P. Haslam, December 21st, 1945.
- Bawdeswell Nettle 3842, from Lt.-Col. Q. E. Gurney to John P. Haslam, December 21st, 1945.

- Bolwick Birdlime 4th 3706, from Buxton & Birkbeck to C. R. Birkbeck, January 2nd, 1946.
- Bolwick Daylight 3196, from Buxton & Birkbeck to C. R. Birkbeck, October 1945.
- Bolwick Dewdrop 3594, from Buxton & Birkbeck to C. R. Birkbeck, May 1st, 1946.
- Bolwick Diana 2nd 3424, from Buxton & Birkbeck to C. R. Birkbeck, October 1945.
- Bolwick Dunlin 3202, from Buxton & Birkbeck to C. R. Birkbeck, October 1945.
- Bolwick Lorna 3608, from Buxton & Birkbeck to C. R. Birkbeck, May 1st, 1946.
- Bolwick Pearl 3612, from Buxton & Birkbeck to C. R. Birkbeck, May 1st, 1946.
- Bolwick Penelope 3438, from Buxton & Birkbeck to C. R. Birkbeck, October 1945.
- Bolwick Pussy 3440, from Buxton & Birkbeck to C. R. Birkbeck, October 1945.
- Bolwick Sable 3620, from Buxton & Birkbeck to C. R. Birkbeck, May 1st, 1946.
- Bolwick Salsify 3rd 3442, from Buxton & Birkbeck to C. R. Birkbeck, October 1945.
- Bolwick Samphire 3444, from Buxton & Birkbeck to C. R. Birkbeck, October 1945.
- Bolwick Walfin 3214, from Buxton & Birkbeck to C. R. Birkbeck, October 1945.
- Bolwick Wimple 3446, from Buxton & Birkbeck to C. R. Birkbeck, October 1945.
- Faygate Piebald 3308, from Miss Alexander to G. Everton, October 30th, 1945.
- Stumbleholme Faline 3972, from J. A. Farmer to E. F. St. John, October 11th, 1945.
- Woodbastwick Begum 5th 3700, from Buxton & Birkbeck to C. R. Birkbeck, May 1st, 1946.
- Woodbastwick Snowberry 3520, from Buxton & Birkbeck to C. R. Birkbeck, February 5th, 1946.

LIST OF MEMBERS MAKING ENTRIES OF CATTLE FOR REGISTRATION IN THIS VOLUME,
AND OF BREEDERS OF ANIMALS INCLUDED IN THIS VOLUME.

| Name of Owner or Breeder. | Variety of Breed. | Owner or Member registering entry. | | Breeder. | |
|---|-------------------|------------------------------------|------------|-------------|------------|
| | | BULLS. page | COWS. page | BULLS. page | COWS. page |
| ALEXANDER, MISS W. ... | Polled | 39 | 39, 40 | 39 | 39, 40 |
| BEDFORD, THE DUKE OF ... | Horned | | 15, 16 | | 15, 16 |
| BUXTON, WALTER & BIRKBECK, C. R. ... | Polled | 31 | 32-35 | 31 | 32-35 |
| BIRKBECK, C. R. ... | " | 41 | 41 | 41 | 41 |
| CATOR, COL. H. J. (Grading-up Register) | " | | 51, 52 | | 51, 52 |
| FARMER, JAMES ... | " | | 47 | | 47 |
| GURNEY, LIEUT.-COL. Q. E. ... | " | 17, 18, 19 | 19-29 | 17, 18, 19 | 19-29 |
| HASLAM, J. P. ... | " | 37 | 37, 38 | 37 | 37, 38 |
| LANCASTER, COLONEL C. G., M.P. | " | 43 | 43-46 | 43 | 43-46 |
| SMITH, BRIG.-GEN. K. KINCAID | " | | 49, 50 | | 49, 50 |

58

59

Constitution, Rules and Bye-Laws
OF THE
BRITISH WHITE CATTLE
SOCIETY

CONSTITUTION.

1. The name of the Society is the BRITISH WHITE CATTLE SOCIETY.
2. The Society shall consist of the President, Vice-Presidents, Treasurer, and an unlimited number of Members, whose names and addresses shall be registered by the Secretary in a book kept for that purpose.
3. The entire control and management of the Society shall be vested in a Council, consisting of the President, Vice-Presidents, Treasurer, and 12 elected members, six of whom shall retire annually and be eligible for re-election.

RULES.

1. The objects for which the Society is founded are:—
 - (a) To encourage the breeding of British White Cattle.
 - (b) To establish and publish a Herd Book for them.
 - (c) To obtain classes, to augment prizes at Shows, and to recommend judges thereat.
 - (d) To investigate cases of doubtful and suspected pedigrees.
 - (e) To settle disputes and questions relating to, or connected with, British White Cattle.
 - (f) To promote sales by auction or by private treaty of registered British White Cattle.
 - (g) To take any action legally incidental or conducive to attainment of the above objects, or any of them.

2. The election of Members shall be vested solely in the Council and shall be by ballot.

3. Any person favourable to the objects of the Society and willing to conform to its rules shall be eligible for membership, but every candidate must be proposed in writing by a Member of the Society, and no person who has been expelled from any other breed Society shall be elected a member of the British White Cattle Society.

4. Any Member may withdraw from the Society on giving notice to the Secretary in writing, such retiring Member to have no claim whatever against the Society, and to be liable for his subscription for the current year in which such notice is given.

5. The annual subscription shall be one guinea, payable on election, and subsequently on the 1st of January in each year; but no Member whose subscription is in arrear shall be entitled to any privileges of the Society. Should any Member not have paid his subscription by the 30th April in any year, the Secretary shall send him notice by registered letter to pay the same, and should his subscription be still unpaid on December 31st in the same year, his name may be erased from the list of Members at the discretion of the Council.

6. Any Member violating the Rules of the Society shall be liable to be expelled by a vote of a majority of the Council, and any Member who shall, in the opinion of the Council, have been guilty or suspected of fraudulent practices in connection with live stock or live stock shows, or have acted in any way derogatory to the interests of the Society, or the breed, or who for any other reason shall be deemed by the Council to be an undesirable Member, shall be expelled.

7. Should a vacancy occur on the Council or among the officers, the Council shall fill such vacancy from among the Members of the Society. The Member so elected shall be deemed to represent the Member whose place he takes, and shall retire when that Member's term of office would have expired.

8. The Council may appoint Committees for any special purpose, and may delegate to them such of the powers of the Council as they may think necessary. The President and Vice-Presidents of the Society shall be ex-officio Members of all Committees.

9. A General Meeting of the Society shall be held not later than the week of the Royal Show in every year, at such time and place as the Council shall appoint, and 14 days' notice shall be given to every Member of the Society. At such Meeting a Report and Balance Sheet for the previous year shall be submitted, and the Officers and Council for the current year elected.

The said Annual Report and Balance Sheet, duly audited, shall be printed and circulated to the Members with the notice calling the Meeting.

10. The Council may at any time, and upon a requisition signed by not less than six Members of the Society (specifying the business for which such meeting is required) shall summon an Extraordinary General Meeting of the Society. At such extraordinary General Meeting no business may be transacted other than that for which such Meeting was specially summoned.

11. Every General Meeting shall have power to elect Honorary Members, to consider and vote on any report which the Council may present, and any resolution of which notice shall have been sent to every Member not less than 14 days previously. The voting at all General Meetings shall be by show of hands, and the Chairman shall have a casting vote.

12. The Council shall have power to deal with any matter which may arise and which is not provided for in these Rules.

13. In all these Rules the word "he" shall be deemed to include the word "she."

BYE-LAWS.

1. The Herd Book shall include particulars of the pedigree of British White Cattle eligible to be entered therein, and such other information as the Council or General Meeting may from time to

time decide. The charge for entry in the Herd Book is 10s. for males and 5s. for females, and for entry in the Grading-up Register 3s. 6d. for both sexes, and all fees must be paid at the time of entry.

2. Up to a date to be decided by the Council, cattle of any age, which are partly of registered British White blood, may be entered in the Herd Book, on inspection, provided they are, in the opinion of the inspectors, eligible according to Standard.

3. Every herd of over 5 animals must have a registered prefix, in addition to which each animal must be given a name, which cannot be altered after registration. The Council reserve the right to refuse any name or prefix without assigning a reason.

The charge for prefix will be a guinea except in the case of tenant farmers and small holders when the annual membership will be 10s. 6d. and the prefix 5s.

Animals and herd-prefixes may be registered under plural ownership, providing not less than two partners in a partnership or two Directors of a Company are members and that no expelled member participates.

4. Any bull for which registration is desired and every cow calf must be registered before February 1st in the year following its birth or date of Inspection (under Bye-law 2), otherwise it will not be eligible for entry in the Herd Book, except by permission of the Council.

This Rule does not apply to calves born in the wild herds.

5. The bona-fide owner of the cow at the time she calves shall be the breeder of the calf.

When a cow has been served by more than one bull the names of all must be given.

6. The transfer of any registered animal may be recorded on payment of a fee of 5s. No animal bred from a transferred bull or cow will be accepted for registration, unless the transfer of such bull or cow has been registered in the books of the Society.

THE BRITISH WHITE CATTLE SOCIETY

Show Rules and STANDARD

GOVERNING THE

Exhibition, Inspection, Description and Judging

OF

BRITISH WHITE CATTLE

SHOW RULES.

1. No cattle can be shown as "British White" unless they are registered in, or entered for, the Society's Herd Book.

2. All cattle must be entered for Show under their registered names with Herd Book reference, and the Exhibitor must be the owner and responsible for their description.

3. It is desirable that the judge should have all in-milk females stripped before making his awards.

4. British White Cattle being, above everything, utility cattle, the judge should in his final award give greatest weight to formation, but the dark markings should be preferred to lighter ones, especially in bulls.

STANDARD.

DISTINCTIVE CHARACTERS.—British White Cattle are large, hardy, dual-purpose animals, and breeders and judges should aim at the best combination of milk and meat qualities.

COLOUR.—Must be white with dark points (usually black or red), viz. : Nose, muzzle, eyelids, ear, teats of cows, rudimentary teats of bulls, feet with a splash or spots of colour on the front of each fetlock.

HEADS.—(1) **HORNED.** The horns should be of moderate length and thickness, of equal direction, curving forward and with dark points.

(2) **POLLED.** The head must be entirely hornless, quite free from slugs or rudimentary horns.

The heads of bulls should be masculine in character. Those of cows should be fine, feminine and dairylike.

TOP LINE.—The back should be level, not rising at the root of the tail, broad and expanding over loins to hips—pin bones well apart, especially in the bulls.

BODY.—Deep, with the ribs well sprung, the legs short, set four square, and well apart, enabling the animal to move freely, the brisket deep, wide, and forward, the hind quarters long from the hips, the buttocks being well fleshed down to the hocks.

UNDERLINE.—Level, but with very prominent milk veins in the cows.

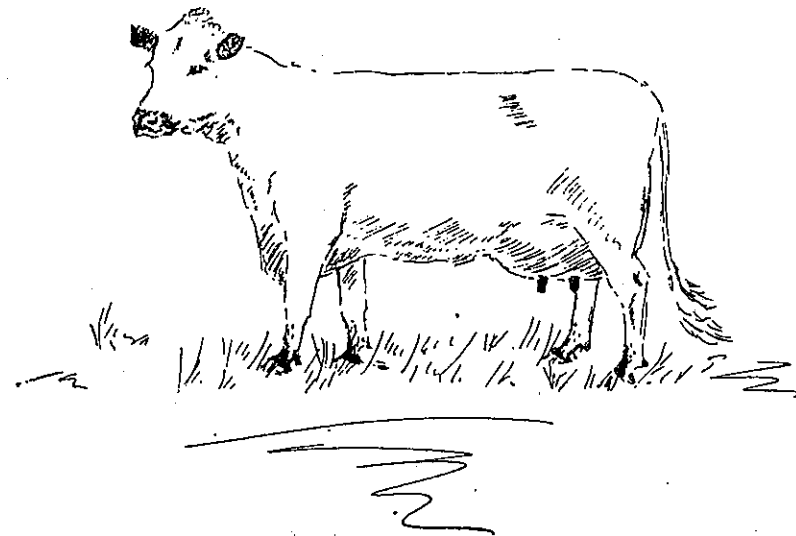
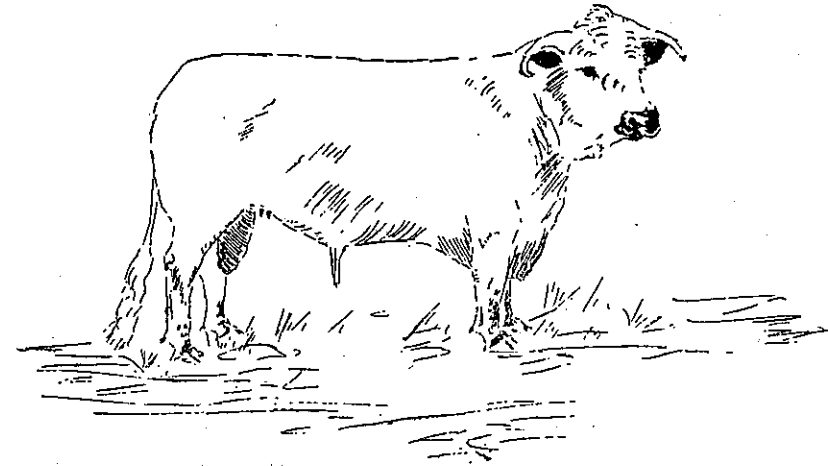
UDDER.—Level, well developed, but not pendulous, the teats of moderate size, set evenly and pointing to the ground.

It is important that the rudimentary teats of bulls should be wide set, well developed, and dark in colour.

SKIN.—Should be fine and handle well.

BRITISH WHITE CATTLE

COLOUR DIAGRAMS.



THE BRITISH WHITE CATTLE SOCIETY

Grading-up Register

of animals partly of Herd Book registered British White Cattle blood.

For the registration of crosses for the grading-up of animals to become eligible in the 5th Cross for registration in the Herd Book, or to comply with the provisions of Bye-law 3 for registration in the Herd Book by inspection.

Divided into

SECTION A. (1st Cross, etc.).

Animals of any age of $\frac{1}{2}$ (one half) or less of Herd Book registered British White blood, and also animals of any age partly or entirely of Herd Book registered British White blood but not eligible for registration in Herd Book or other section of the Grading-up Register.

SECTION B. (2nd Cross).

Calves bred from a Herd Book registered British White bull or cow mated with an animal entered in Section A. of the Grading-up Register.

SECTION C. (3rd Cross).

Calves bred from a Herd Book registered British White bull or cow mated with an animal entered in Section B. of the Grading-up Register.

SECTION D. (4th Cross).

Calves bred from a Herd Book registered British White bull or cow mated with an animal entered in Section C. of the Grading-up Register.

5th Cross. ELIGIBLE FOR HERD BOOK REGISTRATION.

Calves bred from a Herd Book registered British White bull or cow mated with an animal entered in Section D. of the Grading-up Register.

REGULATIONS FOR GRADING-UP REGISTER.

The Grading-up Register to be published as a supplement to the Herd Book.

The abbreviated formula indicating entry in the Grading-up Register to be "G.U.R."

Entry Forms to be similar to Herd Book Entry Forms, but to have the appropriate Grading-up Register heading and section with description of the animals to be entered therein.

Section A. to have entry forms of pink paper.

" B. " " " light blue paper.

" C. " " " light brown paper.

" D. " " " yellow paper.

Grading-up Register Fee, 3s. 6d. per animal registered.

5th Cross, eligible for Herd Book registration, to have Herd Book entry forms and fees at Herd Book registration rates.

All Grading-up registrations must have a Herd prefix, and will be entered in similar manner to and be subject to the same conditions as Herd Book registrations.

Grading-up registrations to be published similar to Herd Book registrations, but without herd headings.

Entries in the Grading-up Register to be published in alphabetical order of prefixes and name of animal in each Section, and each Section to be in two parts—bulls and cows.

Each Section to be separately numbered, with "odd" numbers for bulls and "even" numbers for cows.

Each Grading-up Register entry to comprise prefix and name of animal, Section letter, number with G.U.R. affixed, horned or polled, colour, date of birth, name of breeder, name of owner making entry, sire and dam.

Animals bred by mating "G.U.R." bulls with "G.U.R." cows to be entered in the Grading-up Register in the earliest Section of either parent, when parents are not both in the same Section; when parents are both in the same Section, then that Section (*i.e.*, if a Section A. animal is mated with a Section C. animal the resultant calf must be entered in Section A. If a Section B. animal is mated with a Section B. animal the resultant calf must be entered in Section B.).
