



*Photo by A. H. L. Bohrmann.*

FAYGATE WILFUL IV. 78

Owner and Breeder: SIR CLAUD ALEXANDER, BART.



*Photo by A. H. L. Bohrmann.*

WORURN YOUNG CHARTLEY V. 101.

# THE PARK CATTLE SOCIETY'S HERD BOOK.

---

## VOLUME III.

---

1922.

*Printed by :*

W. E. BAXTER LTD., PRINTERS AND STATIONERS  
HIGH STREET.

**List of Members making Entries of Cattle for Registration  
in this Volume, and of Breeders of Animals included  
in this Volume.**

Name of Owner or Breeder.	Variety of Breed.	Owner or Member registering entry.		Breeder	
		Bulls page.	Cows page.	Bulls page.	Cows page.
ALEXANDER, SIR CLAUD	Horned		21		21
BOHRMANN, A. H. L.	"	29		29	29
BEDFORD, THE DUKE OF K.G. ... ..	"	31	31, 32	31	31, 32
COCKS, ALFRED HENEAGE	"	23	23, 24, 25		23, 24, 25, 29
DAWKINS, GEORGE H.	"			29	29
DYNEVOR, THE LORD ...	"	17	17, 18, 19	17	17, 18, 19
HOWELL, CAPT. J. H. ...	"		27	23	27
ALEXANDER, SIR CLAUD	Polled		41		41
BUXTON, WALTER, AND BIRKBECK, C. R. ...	"	39	39	39	39
CASE, T. H. ... ..	"	37	37	37	37
CATOR, JOHN ... ..	"	49	49, 50, 51	43, 49	49, 50, 51
GURNEY, MAJOR QUINTIN E. ... ..	"	33, 34	34, 35, 36	33, 34	34, 35, 42
GURNEY, MRS. R. ...	"			33	35, 36
LANCASTER, MRS. ...	"	43	43, 44	43	43, 44
SHAKERLEY, SIR WALTER BART. ... ..	"	47	47, 48	47	47, 48
SMITH, BRIG.-GEN. KEN- NETH KINCAID ...	"		45		45
WOODIWISS, MAJOR E. SYDNEY ... ..	"	53		53	

# THE PARK CATTLE SOCIETY.

**Patron :**

THE EARL OF TANKERVILLE.

**President :**

THE DUKE OF BEDFORD, K.G.

**Vice-President :**

THE DUKE OF HAMILTON.

**Council :**

SIR CLAUD ALEXANDER, Bart.	MRS. QUINTIN GURNEY.
A. H. L. BOHRMANN.	MRS. LANCASTER.
JOHN CATOR.	A. E. MACLEOD.
ALFRED H. COCKS.	FRANK P. MATTHEWS.
GEORGE H. DAWKINS.	COL. SIR WALTER SHAKERLEY,
THE LORD DYNEVOR.	Bart., C.B.E.
BRIG.-GEN. KINCAID SMITH.	

**Executive Committee :**

SIR CLAUD ALEXANDER, Bart.	THE LORD DYNEVOR.
A. H. L. BOHRMANN.	MAJOR GURNEY.
JOHN CATOR.	MRS. QUINTIN GURNEY.
FRANK P. MATTHEWS.	

**Hon. Treasurer :** MAJOR GURNEY.

**Secretary :** EVELYN R. SANDWITH.

The Studio,  
North Holmwood,  
Dorking.

# THE PARK CATTLE SOCIETY.

## LIST OF MEMBERS.

Alexander, Lady, Faygate Wood, Sussex.  
 Alexander, Sir Claud, Bart., Faygate Wood, Sussex.  
 Bedford, The Duke of, K.G., Woburn Abbey, Bedfordshire.  
 Birkbeck, C. R., Horstead Place, Norwich.  
 Bohrmann, A. H. L., Winkhurst Green, Ide Hill, near Sevenoaks.  
 Buxton, Walter, Queen Anne's Mansions, London, S.W.  
 Case, T. H., Blickling, Aylsham, Norfolk.  
 Cator, John, Woodbastwick Hall, Norwich.  
 Cocks, Alfred Heneage, Poynetts, Skirmett, near Henley-on-Thames.  
 Dawkins, George H., Wilcote, Charlbury, Oxon.  
 Duff, Sir Michael, Bart., Vaynol Park, Bangor, N. Wales.  
 Dynevor, The Lord, Dynevor Castle, Llandilo, S. Wales.  
 Gurney, Major Quintin, Bawdeswell Hall, Norfolk.  
 Gurney, Mrs. Quintin, Bawdeswell Hall, Norfolk.  
 Gurney, Mrs. Richard, Northrepps Hall, Norwich.  
 Hamilton, The Duke of, Hamilton Palace, Lanarkshire.  
 Howell, Captain J. H., Trewellwell, Solva R.S.O., Pembrokeshire.  
 Jobling, R. L., Higham Dykes, Newcastle-on-Tyne.  
 Jobling, Mrs., Higham Dykes, Newcastle-on-Tyne.  
 Kincaid Smith, Brigadier-General K., The Priory, St. Osyth,  
 Colchester.  
 Lancaster, Mrs., Kelmarsh Hall, Northampton.  
 Leverhulme, The Viscount, The Hill, Hampstead Heath, London.  
 N.W. 3.  
 MacLeod, A. E., Beech Mount, Trafford Road, Alderley Edge.  
 Masfield, John R. B., Roschill, Cheadle, Staffordshire.  
 Matthews, Frank P., 27, Cavendish Square, London, W.1.  
 Shakerley, Lady, Somerford Park, Cheshire.  
 Shakerley, Col. Sir Walter, Bart., C.B.E., Somerford Park, Cheshire.  
 Silley, John, Theydon Grove, Epping.  
 Tankerville, The Earl of, Chillingham Castle, Belford, Northum-  
 berland.  
 Woodiwiss, Major E. Sydney, Woodrooffe, Great Waltham, near  
 Chelmsford.

## PREFACE.

---

The present Volume contains, in addition to the wild herds, particulars of 20 bulls and 95 cows, and also the long desired standard of points to which attention is particularly called.

The thanks of the Society are due to those Members who so handsomely subscribed for additional Classes at the Cambridge Show, which resulted in such a splendid entry, especially in the polled section.

A new polled herd has been founded by Major E. Sydney Woodiwiss with cows from the Bawdeswell and Faygate herds, and a bull from Woodbastwick, and, at the time of going to press, other herds of both varieties are in process of formation, but these, of course, are not eligible for mention in the present volume.

The work has been taken over by me at very short notice owing to the resignation of the late Secretary, but I trust it may be found fairly accurate, and that any shortcomings may be accounted for by this fact.

I am glad to avail myself of this opportunity of thanking Members for electing me Secretary of the Society and of assuring them of my best endeavours to deserve the confidence they have placed in me.

EVELYN R. SANDWITH,

*Secretary.*

Notes on the Numbers, etc., of the Herds.

---

## HORNED HERDS.

---

### THE CADZOW HERD.

Owner : The Duke of Hamilton, Hamilton Palace, Lanarkshire.

This herd now consists of 20 head, 5 are bulls, and there are 15 cows and heifers.

---

### THE CHARTLEY HERD (at Woburn).

Owner : The Duke of Bedford, K.G., Woburn Abbey, Bletchley.

The herd at present contains 4 bulls and 22 cows and heifers, and 2 bull calves.

---

### THE CHILLINGHAM HERD.

Owner : The Earl of Tankerville, Chillingham Castle, Belford, Northumberland.

This herd remains in the same flourishing condition as at the last census, there being an increase of one animal, 57 head in all.

---

### THE VAYNOL HERD.

Owner : Sir Michael Duff, Bart., Vaynol Park, Bangor.

In 1921 the numbers were 19, but in 1922 they had fallen to 13 ; in the present year they have risen to 15, 2 bulls, 10 cows and heifers, 2 yearlings, and a calf.

### THE DYNEVOR HERD.

Owner : The Lord Dynevor, Dynevor Castle, Llandilo,  
S. Wales.

This herd shows an increase since the publication of Volume II.

It then contained 3 bulls and 31 females, but it numbers at present 2 bulls, 3 bull calves, 31 cows and heifers, and 5 heifer calves.

### THE FAYGATE HERD.

Owner : Sir Claud Alexander, Bart., Faygate Wood,  
Sussex.

The horned section of this herd now comprises 1 bull, 7 cows, 2 heifers and 3 cow calves.

### THE POYNETTS HERD.

Owner : Alfred H. Cocks, Poynetts, Skirmett, near Henley-  
on-Thames.

This herd shows a slight increase in numbers since 1921 ; it then consisted of 2 bulls, 1 bull calf and 20 cows and heifers ; the present returns are 2 bulls, 1 bull calf, 19 cows and heifers and 6 heifer calves.

### THE SOLVA HERD.

Owner : Captain J. H. Howell, Trewellwell, Solva, Pembroke-  
shire.

In Volume II. this herd is represented by 1 bull, 11 cows and heifers, and 2 calves.

There is no stock bull just now ; the herd at present comprises 10 cows and heifers and 9 calves (5 bull, 4 heifer).

### THE WINKHURST HERD.

Owner : A. H. L. Bohrmann, Winkhurst Green, Ide Hill, near  
Sevenoaks.

This herd is now represented by 1 bull, 4 cows and 1 heifer, together with 3 calves (1 bull, 2 heifer).

## POLLED HERDS.

### THE BAWDESWELL HERD.

Owner : Major Gurney, Bawdeswell Hall, Norfolk.

This herd now numbers 38, being comprised of 5 bulls and bull calves, 18 cows, 15 heifers and heifer calves. This compares with 6 bulls and 30 cows and heifers entered in Volume II.

### THE BLICKLING HERD.

Owner : T. H. Case, Blickling, Aylsham, Norfolk.

The numbers are now 11 cows and heifers, compared with 6 cows and 1 heifer calf in Volume II.

### THE BOLWICK HERD.

Owners : Walter Buxton and C. R. Birkbeck, Horstead House,  
Norwich.

This herd now consists of 2 bulls, 4 cows and 4 calves.

### THE FAYGATE HERD.

Owner : Sir Claud Alexander, Bart., Faygate Wood, Sussex.  
The polled section of this herd consists of 1 bull and 3 heifers.

### THE KELMARSH HERD.

Owner : Mrs. Lancaster, Kelmarsh Hall, Northampton.

The present numbers are 16 cows, 11 heifers, 5 heifer calves and 1 bull, a total of 36 ; in Volume II. there were 3 bulls and 30 cows and heifers.

### THE NORTHREPPS HERD.

Owner : Mrs. Richard Gurney, Northrepps Hall, Norwich.  
This herd is now reduced to only 3 cows.

## THE ST. OSYTH HERD.

Owner : Brig.-Gen. K. Kincaid Smith, The Priory, St. Osyth,  
Colchester.

This herd now contains 1 bull, 9 cows and 4 heifers, a total of 14

## THE SOMERFORD HERD.

Owner : Col. Sir Walter Shakerley, Bart., C.B.E.,  
Somerford Park, Cheshire.

There is a decrease in this herd; at present the numbers are  
2 bulls and 28 females, against 1 bull and 42 females in Volume II.

## THE WOODBASTWICK HERD.

Owner : John Cator, Woodbastwick Hall, Norwich.

This herd at present consists of 3 bulls and 32 cows,  
heifers and cow calves.

## THE WOODROOFE HERD.

Owner : Major E. Sydney Woodiwiss, Woodrooffe, Great  
Waltham, near Chelmsford, Essex.

This herd has been founded by the acquisition of a bull from  
Woodbastwick, 3 cows from Bawdeswell, and 2 cows from Faygate.

## ERRATA.

## VOLUME I.

Page 71.—Woodbastwick Jollity 380 should be 380 I.F.S.

## VOLUME II.

Page 50.—The dam of Kelmarsh Daffodil II. 550 should be Kel-  
marsh Daffodil 242.

# Register of the Horned Herds.

## THE DYNEVOR HERD.

Owner, The Lord Dynevor,

Dynevor Castle, Llandillo, S. Wales.

### BULL.

#### DYNEVOR GLYNDWR 141,

White with black points, calved February 28, 1921; breeder, The Lord Dynevor;

*Sire*, Dynevor David 5,

*Dam*, Dynevor Cynthia 32.

### COWS.

#### DYNEVOR FANCY 632,

Black with a little white, calved January 4, 1920; breeder, The Lord Dynevor;

*Sire*, Dynevor David 5,

*Dam*, Dynevor M.P. II. 46.

#### DYNEVOR GARDENIA 634,

White with black points, calved February 1, 1921; breeder, The Lord Dynevor;

*Sire*, Dynevor David 5,

*Dam*, Dynevor M.P. II. 46.

#### DYNEVOR GARNET 636,

White with black points, calved September 24, 1921; breeder, The Lord Dynevor;

*Sire*, Dynevor Tiger Lily 69,

*Dam*, Dynevor Margaret 42.



SOLVA SNOWSTORM 79.  
Owner: THE LORD DYNEVOR.

Photo by Sport and General.



**DYNEVOR GERANIUM 638,**

Black with white spots, calved October 14, 1921 ; breeder, The Lord Dynevor ;

*Sire*, Dynevor David 5,  
*Dam*, Dynevor Julia 40.

**DYNEVOR GRACE 640,**

White with black points, calved July 6, 1921 ; breeder, The Lord Dynevor ;

*Sire*, Solva Snowball 27,  
*Dam*, Dynevor Dahlia 34.

**DYNEVOR GWYNNETH 642,**

White with black points, calved July 25, 1921 ; breeder, The Lord Dynevor ;

*Sire*, Dynevor David 5,  
*Dam*, Dynevor Sweet Pea 56.

**DYNEVOR HAIRBELL 644,**

Black, calved July 16, 1922 ; breeder, The Lord Dynevor ;

*Sire*, Dynevor Tiger Lily 69,  
*Dam*, Dynevor Sweet Pea 56.

**DYNEVOR HAWTHORN 646,**

White with black points, calved September 28, 1922 ; breeder, The Lord Dynevor ;

*Sire*, Dynevor Tiger Lily 69,  
*Dam*, Dynevor Aimée 8.

**DYNEVOR HAZEL 648,**

White with black points, calved September 17, 1922 ; breeder, The Lord Dynevor ;

*Sire*, Dynevor David 5,  
*Dam*, Dynevor Julia 40.

**DYNEVOR HEATHER 650,**

White with black points, calved May 22, 1922 ; breeder, The Lord Dynevor ;

*Sire*, Dynevor Tiger Lily 69,  
*Dam*, Dynevor Dahlia 34.

**DYNEVOR HEIRLOOM 652,**

Black, calved April 12, 1922 ; breeder, The Lord Dynevor ;

*Sire*, Dynevor David 5,  
*Dam*, Dynevor Sceptre 54.

**DYNEVOR HONEYSUCKLE 654,**

Black, calved April 3, 1922 ; breeder, The Lord Dynevor ;

*Sire*, Dynevor David 5,  
*Dam*, Dynevor Pansy 52.

**DYNEVOR HONOR 656,**

White with black points, calved April 21, 1922 ; breeder, The Lord Dynevor ;

*Sire*, Dynevor David 5,  
*Dam*, Dynevor M.P. II. 46.

**DYNEVOR HYACINTH 658,**

White with black points, calved February 8, 1922 ; breeder, The Lord Dynevor ;

*Sire*, Dynevor David 5,  
*Dam*, Dynevor Alfreda 10.

## THE FAYGATE HERD.

Owner, Sir Claud Alexander, Bart.,

Faygate Wood, Sussex.

### COWS.

#### FAYGATE SYBIL 660,

White with black points, calved May 8, 1922; breeder, Sir Claud Alexander, Bart.;

*Sire*, Faygate Beaconsfield 11 I.F.S.,

*Dam*, Faygate Swop II. 74.

#### FAYGATE WHOOPER 662,

White with black points, calved December 23, 1922; breeder, Sir Claud Alexander, Bart.;

*Sire*, Woburn Young Chartley V. 101, or Faygate Dairyman 121,

*Dam*, Faygate Cygnet 64.

#### FAYGATE WISDOM 664 I.F.S.,

White with black points, calved October 20, 1922; breeder, Sir Claud Alexander, Bart.;

*Sire*, Woburn Young Chartley V. 101,

*Dam*, Ruby.

**THE POYNETTS HERD.**

Owner, Alfred Heneage Cocks,  
Poynetts, Skirmett, near Henley-on-Thames.

**BULL.****POYNETTS SNOWDRIFT 143,**

White with black points, calved February 14, 1921; breeder,  
Captain J. H. Howell.

*Sire*, Solva Snowball 27,

*Dam*, Solva Icicle 98.

**COWS.****POYNETTS IANTHE, 666,**

Black with some white, calved January 11, 1921; breeder, Alfred  
H. Cocks;

*Sire*, Faygate Brace 13,

*Dam*, Poynetts Clio 84.

**POYNETTS IDA 668,**

White with black points, calved June 17, 1921; breeder, Alfred  
H. Cocks;

*Sire*, Poynetts Endymion 19,

*Dam*, Poynetts Flora 434 I.F.S.

**POYNETTS IMOGEN 670,**

Black with some white, calved September 14, 1921; breeder,  
Alfred H. Cocks;

*Sire*, Poynetts Endymion 19,

*Dam*, Poynetts Daphne 86.

**POYNETTS IONA 672,**

White with black points, calved May 12, 1921 ; breeder, Alfred H. Cocks ;

*Sire*, Faygate Brace 13,

*Dam*, Poynetts Aurora 82.

**POYNETTS ISIS 674,**

Black with some white, calved December 21, 1921 ; breeder, Alfred H. Cocks ;

*Sire*, Faygate Brace 13,

*Dam*, Poynetts Arethusa 80.

**POYNETTS IZOD 676,**

White with black points, calved July 27, 1921 ; breeder, Alfred H. Cocks ;

*Sire*, Faygate Brace 13.

*Dam*, Poynetts Fairy 90.

**POYNETTS JANET 678,**

White with black points, calved March 10, 1922 ; breeder, Alfred H. Cocks ;

*Sire*, Poynetts Endymion 19,

*Dam*, Poynetts Gwen 442.

**POYNETTS JANUARIA 680,**

White with black points, calved January 28, 1922 ; breeder, Alfred H. Cocks ;

*Sire*, Faygate Brace 13,

*Dam*, Poynetts Gaea 436.

**POYNETTS JILL 682,**

White with black points, calved January 30, 1922 breeder Alfred H. Cocks ;

*Sire*, Faygate Brace 13,

*Dam*, Poynetts Glaucæ 440.

**POYNETTS JUDY 684,**

White with black points, calved December 9, 1922 ; breeder, Alfred H. Cocks ;

*Sire*, Faygate Brace 13,

*Dam*, Poynetts Gaea 436.

**POYNETTS JULIA 686,**

Black, calved May 9, 1922 ; breeder, Alfred H. Cocks ;

*Sire*, Faygate Brace 13,

*Dam*, Poynetts Galatea 438.

**POYNETTS JUNO 688,**

White with black points, calved August 28, 1922 ; breeder, Alfred H. Cocks ;

*Sire*, Faygate Brace 13,

*Dam*, Poynetts Aurora 82.

## THE SOLVA HERD.

Owner, Captain J. H. Howell,

Trewellwell, Solva R.S.O., Pembrokeshire.

### COWS.

#### SOLVA FLOUR 690,

White with black points, calved July 24, 1921 ; breeder, Captain J. H. Howell ;

*Sire*, Solva Snowball 27,

*Dam*, Solva Fuchsia 94.

#### SOLVA ICE PLANT II. 692,

White with black points, calved June 10, 1922 ; breeder, Captain J. H. Howell ;

*Sire*, Solva Snowball 27,

*Dam*, Solva Ice Plant 96.

#### SOLVA IVORY II. 694,

White with black points, calved May 26, 1922 ; breeder, Captain J. H. Howell ;

*Sire*, Solva Snowball 27,

*Dam*, Solva Ivory 100.

#### SOLVA MYRTLE II. 696,

White with black points, calved February 14, 1922 ; breeder, Captain J. H. Howell ;

*Sire*, Solva Snowball 27,

*Dam*, Solva Blackberry 452.

#### SOLVA SNOWDRIFT 698,

White with black points, calved May 17, 1921 ; breeder, Captain J. H. Howell ;

*Sire*, Solva Snowball 27,

*Dam*, Solva Snowdrop 106.

## THE WINKHURST HERD.

Owner, A. H. L. Bohrmann,  
Winkhurst Green, Ide Hill, near Sevenoaks.

### BULLS.

#### WINKHURST K.G. 145,

White with black points, calved December 19, 1922 ; breeder,  
A. H. L. Bohrmann ;

*Sire*, Winkhurst Wilcoteian, 147 I.F.S.

*Dam*, Faygate Garter 68.

#### WINKHURST WILCOTEIAN 147 I.F.S.,

White with black points, calved March 28, 1921 ; breeder, George  
H. Dawkins ;

*Sire*, Hero,

*Dam*, Wilcote Myrtle 132.

### COWS.

#### WINKHURST FERA 700,

Black, calved May 28, 1922 ; breeder, Alfred H. Cocks ;

*Sire*, Faygate Brace 13,

*Dam*, Poynetts Fairy 90.

#### WINKHURST PRIMIGENIA 702 I.F.S.,

White with black points, calved June 16, 1922 ; breeder, A. H. L.  
Bohrmann ;

*Sire*, Urus,

*Dam*, Wilcote Edelweiss 466.

#### WINKHURST VENUS 704,

White with black points ; calved May 15, 1922 ; breeder, George H.  
Dawkins ;

*Sire*, Wilcote Marjoram 83,

*Dam*, Wilcote Winter Sweet 156.

# **THE CHARTLEY HERD (at Woburn).**

Owner, The Duke of Bedford, K.G.,

Woburn Abbey, Bedfordshire.

## **BULLS.**

### **WOBURN YOUNG CHARTLEY VII. 149,**

White with black points, calved March 17, 1921 ; breeder, The Duke of Bedford, K.G. ;

*Sire*, Woburn Young Chartley 35,

*Dam*, Woburn Bentley Doris 478 I.F.S.

### **WOBURN YOUNG CHARTLEY VIII. 151,**

White with black points, calved March 24, 1921 ; breeder, The Duke of Bedford, K.G. ;

*Sire*, Woburn Young Chartley 35,

*Dam*, Woburn Redditch I. 504 I.F.S.

### **WOBURN YOUNG CHARTLEY IX. 153,**

White with black points, calved April 8, 1922 ; breeder, The Duke of Bedford, K.G. ;

*Sire*, Woburn Young Chartley 35,

*Dam*, Woburn Redditch I. 504 I.F.S.

### **WOBURN YOUNG CHARTLEY XII. 155,**

Black and white, calved May 31, 1922 ; breeder, The Duke of Bedford, K.G. ;

*Sire*, Woburn Young Chartley V. 101,

*Dam*, Woburn, Buckingham XI. 490.

## **COWS.**

### **WOBURN BUCKINGHAM XV.**

White with black points, calved March 24, 1921 ; breeder, The Duke of Bedford, K.G. ;

*Sire*, Woburn Perfection 33,

*Dam*, Woburn Buckingham III. 158.

**WOBURN BUCKINGHAM XVI. 708,**

White with black points, calved March 28, 1921 ; breeder, The Duke of Bedford, K.G. ;

*Sire*, Woburn Perfection II. 89,

*Dam*, Woburn Buckingham VI. 482 I.F.S.

**WOBURN BUCKINGHAM XVII. 710,**

Black, calved May 10, 1921 ; breeder, The Duke of Bedford, K.G. ;

*Sire*, Woburn Perfection II. 89,

*Dam*, Woburn Buckingham VIII. 486.

**WOBURN BUCKINGHAM XVIII. 712,**

White with black points, calved April 13, 1922 ; breeder, The Duke of Bedford, K.G. ;

*Sire*, Woburn Perfection II. 89,

*Dam*, Woburn Buckingham VIII. 486.

**WOBURN BUCKINGHAM XIX. 714,**

White with black points, calved April 21, 1922 ; breeder, The Duke of Bedford, K.G.

*Sire*, Woburn Young Chartley V. 101,

*Dam*, Woburn Buckingham X. 160.

**WOBURN BUCKINGHAM XX. 716,**

White, calved June 15, 1922 ; breeder, The Duke of Bedford, K.G. ;

*Sire*, Woburn Young Chartley 35,

*Dam*, Woburn Buckingham IX. 488.

**WOBURN CHARTLEY IV. 718,**

White, calved July 30, 1921 ; breeder, The Duke of Bedford, K.G. ;

*Sire*, Woburn Perfection III. 91,

*Dam*, Woburn Chartley III. 164.

**WOBURN DORIS VI. 720,**

Black, calved April 23, 1922 ; breeder, The Duke of Bedford, K.G. ;

*Sire*, Woburn Young Chartley V. 101,

*Dam*, Woburn Doris II. 166.



## Register of the Polled Herds.

### THE BAWDESWELL HERD.

Owner, Major Quintin E. Gurney,  
Bawdeswell Hall, Norfolk.

#### BULLS.

##### BAWDESWELL ALBATROSS 157,

White with black points, calved July 31, 1921 ; breeder, Major  
Q. E. Gurney ;

*Sire*, Faygate Beaconsfield 11. I.F.S.,

*Dam*, Faygate Alba 226.

##### BAWDESWELL DRUID 159,

White with black points, calved February 6, 1922 ; breeder, Major  
Q. E. Gurney ;

*Sire*, Bawdeswell Thunderer 117,

*Dam*, Bawdeswell Dove 512 I.F.S.

##### BAWDESWELL ELDER 161,

White with black points, calved March 4, 1921 ; breeder, Major  
Q. E. Gurney ;

*Sire*, Bawdeswell Somers 45,

*Dam*, Bawdeswell Elf 184.

##### BAWDESWELL LEO 163,

White, with black points, calved April 10, 1922 ; breeder Mrs.  
Richard Gurney ;

*Sire*, Faygate Detail 123 I.F.S.

*Dam*, Northrepps Lily 272.



WOODBASTWICK JUNKET II. 378.  
Owner and Breeder: JOHN CAYOR.

**BAWDESWELL PETE 165,**

White with black points, calved January 20, 1921 ; breeder, Major Q. E. Gurney ;

*Sire*, Bawdeswell Somers 45,

*Dam*, Bawdeswell Peewitt 192.

**COWS.****BAWDESWELL BOPEEP 722,**

White with black points, calved May 12, 1921 ; breeder, Major Q. E. Gurney ;

*Sire*, Bawdeswell Somers 45,

*Dam*, Bawdeswell Boadicea II. 176.

**BAWDESWELL COAL 724,**

Black and white, calved November 1, 1922 ; breeder, Major Q. E. Gurney ;

*Sire*, Bawdeswell Thunderer 117,

*Dam*, Bawdeswell Cowslip 510.

**BAWDESWELL COUNTY BELLE 726,**

White with black points, calved November 23, 1922 ; breeder, Major Q. E. Gurney ;

*Sire*, Bawdeswell Thunderer 117,

*Dam*, Bawdeswell Countess 182.

**BAWDESWELL COWRIE 728,**

White with black points, calved November 30, 1921 ; breeder, Major Q. E. Gurney ;

*Sire*, Bawdeswell Thunderer 117,

*Dam*, Bawdeswell Countess 182.

**BAWDESWELL CREOLE, 730,**

White with black points, calved July 29, 1922 ; breeder, Major Q. E. Gurney ;

*Sire*, Bawdeswell Thunderer 117,

*Dam*, Bawdeswell Council 508.

**BAWDESWELL ELNORA 732,**

White with black points, calved July 21, 1921 ; breeder, Major Q. E. Gurney ;

*Sire*, Bawdeswell Thunderer 117,

*Dam*, Bawdeswell Ella 188.

**BAWDESWELL ETHEL 734,**

White, with black points, calved June 16, 1922 ; breeder, Major Q. E. Gurney ;

*Sire*, Bawdeswell Thunderer 117,

*Dam*, Bawdeswell Ella 188.

**BAWDESWELL LAPWING 736,**

White and black, calved November 24, 1922 ; breeder, Major Q. E. Gurney ;

*Sire* Bawdeswell Thunderer 117,

*Dam*, Bawdeswell Lille 520.

**BAWDESWELL LIBERTY 738,**

White with black points, calved April 26, 1921 ; breeder, Mrs. Richard Gurney ;

*Sire*, Bawdeswell Briton 41,

*Dam*, Northrepps Lily 272.

**BAWDESWELL PRIM 740,**

White with black points, calved July 5, 1921 ; breeder, Mrs. Richard Gurney ;

*Sire*, Bawdeswell Briton 41,

*Dam*, Northrepps Primrose 274 I.F.S.

**BAWDESWELL SNOWBUNTING 742,**

White and black, calved October 31, 1922 ; breeder, Major Q. E. Gurney ;

*Sire*, Bawdeswell Thunderer 117,

*Dam*, Bawdeswell Snowball 196.

**BAWDESWELL SPARKLET 744,**

White with black points, calved March 31, 1921; breeder, Mrs. Richard Gurney;

*Sire*, Bawdeswell Briton 41,

*Dam*, Northrepps Sparkle 282.

**BAWDESWELL SPORTIVE 746,**

White with black points, calved February 28, 1921; breeder, Mrs. Richard Gurney;

*Sire*, Bawdeswell Briton 41,

*Dam*, Northrepps Spot 284.

**BAWDESWELL TOPSY 748,**

White with black points, calved April 20, 1921; breeder, Mrs. Richard Gurney;

*Sire*, Bawdeswell Briton 41,

*Dam*, Bawdeswell Topknot II. 202.

**THE BLICKLING HERD.**

Owner, T. H. Case,

Blickling, Aylsham, Norfolk.

**BULL.****BLICKLING VICTOR 167,**

White with black points, calved March 27, 1922; breeder, T. H. Case;

*Sire*, Bawdeswell Elk 111,

*Dam*, Blickling Mabel 212.

**COWS.****BLICKLING DAHLIA 750,**

White with black points, calved August 2, 1922; breeder, T. H. Case;

*Sire*, Bawdeswell Elk 111,

*Dam*, Blickling Maisie 214.

**BLICKLING DAPHNE 752,**

White with black points, calved November 28, 1921; breeder T. H. Case;

*Sire*, Blickling Taurus 47,

*Dam*, Blickling Belle 204.

**BLICKLING MARIGOLD 754,**

White with brown points, calved December 28, 1922; breeder T. H. Case;

*Sire*, Bawdeswell Elk 111,

*Dam*, Blickling Mary 216.

**BLICKLING MOSS ROSE 756,**

White with black points, calved January 17, 1921; breeder, T. H. Case;

*Sire*, Blickling Taurus 47,

*Dam*, Blickling Mabel 212.

## THE BOLWICK HERD.

Owners, Walter Buxton and C. R. Birkbeck.

Horstead House, Norwich.

### BULL.

#### **BOLWICK COURTIER 169,**

White with black points, calved June 16, 1922 ; breeders, Buxton and Birkbeck ;

*Sire*, Bawdeswell Elk 111,

*Dam*, Bawdeswell Coronet 180.

### COWS.

#### **BOLWICK MAPLE 758 I.F.S.,**

White with black points, calved April 18, 1922 ; breeders, Buxton and Birkbeck ;

*Sire*, Bawdeswell Elk 111,

*Dam*, Mulberry.

#### **BOLWICK DOLLY 760 I.F.S.,**

White with black points, calved September 10, 1922 ; breeders, Buxton and Birkbeck ;

*Sire*, Bawdeswell Elk 111,

*Dam*, Dot.

## THE FAYGATE HERD.

Owner, Sir Claud Alexander, Bart.,

Faygate Wood, Sussex.

### COWS.

#### FAYGATE DISGRACE 762,

Black, calved June 17, 1922 ; breeder, Sir Claud Alexander, Bart. ;

*Sire*, Faygate Detail 123 I.F.S.,

*Dam*, Faygate Grace 422.

#### FAYGATE TAILS II. 764 I.F.S.,

White with black points, calved March 15, 1921 ; breeder, Sir Claud Alexander, Bart. ;

*Sire*, Cement,

*Dam*, Faygate Tails 234.

## THE KELMARSH HERD.

Owner, Mrs. Lancaster,

Kelmarsh Hall, Northampton.

### BULLS.

#### KELMARSH DON 171,

White with black points, calved July 19, 1921; breeder, Mrs. Lancaster;

*Sire*, Kelmarsh Ancus 49,

*Dam*, Kelmarsh Daisy 244.

#### KELMARSH JACK 173,

White with black points, calved January 16, 1922; breeder, John Cator;

*Sire*, Bawdeswell Plevna 43,

*Dam*, Woodbastwick Jollity 380.

### COWS.

#### KELMARSH BUTTERCUP III. 766,

White with black points, calved February 8, 1921; breeder, Mrs. Lancaster;

*Sire*, Kelmarsh Ancus 49,

*Dam*, Kelmarsh Buttercup 236A.

#### KELMARSH COLTSFOOT III. 768,

White with black points, calved January 17, 1921; breeder, Mrs. Lancaster;

*Sire*, Kelmarsh Ancus 49,

*Dam*, Kelmarsh Coltsfoot II. 546.

**KELMARSH FUCHSIA III. 770,**

White with black points, calved July 27, 1921; breeder, Mrs. Lancaster;

*Sire*, Kelmarsh Ancus 49,

*Dam*, Kelmarsh Fuchsia 246.

**KELMARSH PINK III. 772,**

White with black points, calved May 24, 1921; breeder, Mrs. Lancaster;

*Sire*, Kelmarsh Ancus 49,

*Dam*, Kelmarsh Pink 256.

**KELMARSH PRINCESS 774.**

White with black points, calved January 6, 1922; breeder, Major Q. E. Gurney;

*Sire*, Bawdeswell Thunderer 117,

*Dam*, Northrepps Primula 580.

**KELMARSH SNOWDROP III. 776,**

White with black points, calved August 13, 1922; breeder, Mrs. Lancaster;

*Sire*, Kelmarsh Chester 127,

*Dam*, Kelmarsh Snowdrop 262.

**KELMARSH SPORT 778,**

White with black points, calved March 3, 1922; breeder, Major Q. E. Gurney;

*Sire*, Faygate Detail 123 I.F.S.,

*Dam*, Northrepps Spot 284.

**KELMARSH WALLFLOWER III. 780,**

White with black points, calved August 18, 1922; breeder, Mrs. Lancaster;

*Sire*, Kelmarsh Chester 127,

*Dam*, Kelmarsh Wallflower 266.

**THE ST. OSYTH HERD.**

Owner, Brigadier-General Kenneth Kincaid Smith.

The Priory, St. Osyth, near Colchester.

**COWS.****ST. OSYTH ABBESS 782,**

White with black points, calved December 19, 1921; breeder, Brigadier-General K. Kincaid Smith;

*Sire*, Bawdeswell Thunderer 117,

*Dam*, Northrepps Lichen 578.

**ST. OSYTH ALPHA 784,**

White, calved December 24, 1921; breeder, Brigadier-General K. Kincaid Smith;

*Sire*, Bawdeswell Thunderer 117,

*Dam*, Woodbastwick Jasper III. 610.

**ST. OSYTH BUTTERFLY 786,**

White with black points, calved December 22, 1922; breeder, Brigadier-General K. Kincaid Smith;

*Sire*, St. Osyth Rex 133,

*Dam*, Bawdeswell Snowberry 532.

## THE SOMERFORD HERD.

Owner, Col. Sir Walter Shakerley, Bart., C.B.E.,  
Somerford Park, Cheshire.

### BULL.

#### SOMERFORD SNOWMAN 175,

White with black points, calved February 21, 1922 ; breeder,  
Col. Sir Walter Shakerley, Bart., C.B.E. ;

*Sire*, Bawdeswell Snowdon 113,

*Dam*, Somerford Big Molly II. 292.

### COWS.

#### SOMERFORD AUNTIE III. 788,

White with black points, calved February 12, 1922 ; breeder,  
Col. Sir Walter Shakerley, Bart., C.B.E. ;

*Sire*, Bawdeswell Snowdon 113,

*Dam*, Somerford Auntie 286.

#### SOMERFORD BUBBLES IV. 790,

White with black points, calved December 17, 1922 ; breeder,  
Col. Sir Walter Shakerley, Bart., C.B.E. ;

*Sire*, Bawdeswell Snowdon 113,

*Dam*, Somerford Bubbles III. 298.

#### SOMERFORD CHARLIE V. 792,

White with black points, calved March 3, 1922 ; breeder, Col. Sir  
Walter Shakerley, Bart., C.B.E. ;

*Sire*, Bawdeswell Snowdon 113,

*Dam*, Somerford Charlie III. 300.



**SOMERFORD MAGPIE IV. 794,**

White, calved September 6, 1922; breeder, Col. Sir Walter Shakerley Bart., C.B.E.;

*Sire*, Bawdeswell Snowdon 113,

*Dam*, Somerford Magpie III. 588.

**SOMERFORD TOPSY III. 796,**

White with black points, calved February 19, 1922; breeder, Col. Sir Walter Shakerley, Bart., C.B.E.;

*Sire*, Bawdeswell Snowdon 113,

*Dam*, Somerford Topknot II. 332.

**THE WOODBASTWICK HERD.**

**Owner, John Cator.**

Woodbastwick Hall, Norwich.

**BULL.****WOODBASTWICK BLACKFRIAR 177,**

White with black points, calved December 18, 1921; breeder, John Cator;

*Sire*, Bawdeswell Plevna 43,

*Dam*, Woodbastwick Blackberry III. 350.

**COWS.****WOODBASTWICK BLACKBERRY VI. 798,**

White with black points, calved May 20, 1922; breeder, John Cator;

*Sire*, Woodbastwick Petrarch 139,

*Dam*, Woodbastwick Blackberry 346.

**WOODBASTWICK BLACK CAP 800,**

White with black points, calved April 6, 1921; breeder, John Cator;

*Sire*, Bawdeswell Plevna 43,

*Dam*, Woodbastwick Blackmail II. 352 I.F.S.

**WOODBASTWICK BLACK GOWN 802,**

White with black points, calved March 27, 1922; breeder, John Cator;

*Sire*, Bawdeswell Plevna 43,

*Dam*, Woodbastwick Blackmail II. 352 I.F.S.

**WOODBASTWICK BLUE PETER II. 804,**

White with black points, calved November 25, 1921; breeder, John Cator;

*Sire*, Bawdeswell Plevna 43,

*Dam*, Woodbastwick Blue Peter 358 I.F.S.

**WOODBASTWICK JANITRESS III. 806,**

White with black points, calved May 2, 1921; breeder, John Cator;

*Sire*, Bawdeswell Plevna 43,

*Dam*, Woodbastwick Janitress 366 I.F.S.

**WOODBASTWICK JESSEL 808,**

White with black points, calved August 6, 1921; breeder, John Cator;

*Sire*, Bawdeswell Plevna 43,

*Dam*, Woodbastwick Jester 374 I.F.S.

**WOODBASTWICK JESTER III. 810,**

White with black points, calved August 6, 1921; breeder, John Cator;

*Sire*, Bawdeswell Plevna 43,

*Dam*, Woodbastwick Jester 374 I.F.S.

**WOODBASTWICK JOYCE 812,**

White with black points, calved December 14, 1921; breeder, John Cator;

*Sire*, Bawdeswell Plevna 43,

*Dam*, Woodbastwick Jasper II. 372.

**WOODBASTWICK JUSTICE 814,**

White, with black points, calved December 2, 1920; breeder, John Cator;

*Sire*, Bawdeswell Plevna 43,

*Dam*, Woodbastwick Jasper II. 372.

**WOODBASTWICK PARK MASCOT 816,**

White with black points, calved May 20, 1922; breeder, John Cator;

*Sire*, Bawdeswell Plevna 43,

*Dam*, Woodbastwick Primitive III. 630.

**WOODBASTWICK PEPPERMINT II. 818,**

White with black points, calved April 27, 1921; breeder, John Cator;

*Sire*, Bawdeswell Plevna 43,

*Dam*, Woodbastwick Peppermint 624.

**WOODBASTWICK PICQUET II. 820,**

White with black points, calved August 14, 1922; breeder, John Cator;

*Sire*, Woodbastwick Petrarch 139,

*Dam*, Woodbastwick Picquet 628.

## THE WOODROOFFE HERD.

Owner, Major E. Sydney Woodiwiss.

"Woodrooffe," Great Waltham, near Chelmsford, Essex.

BULL.

WOODROOFFE CATO 179,

White with black points, calved April 16, 1922; breeder, Major  
E. S. Woodiwiss;

*Sire*, Bawdeswell Plevna 43,

*Dam*, Woodbastwick Janitress 366 I.F.S.

# PREFIXES GRANTED BY THE PARK CATTLE SOCIETY.

---

Bawdeswell	...	...	Gurney, Major Q. E.
Blickling	...	...	Case, T. H.
Bolwick	...	...	Walter Buxton and C. R. Birkbeck.
Cadzow	...	...	Hamilton, The Duke of
Chillingham	...	...	Tankerville, The Earl of
Dynevor	...	...	Dynevor, The Lord
Faygate	...	...	Alexander, Sir Claud, Bart.
Kelmarsh	...	...	Lancaster, Mrs.
Northrepps	...	...	Gurney, Mrs. Richard
Poynetts	...	...	Cocks, Alfred Heneage
St. Osyth	...	...	Kincaid Smith, Brig.-General
Solva	...	...	Howell, Captain J. H.
Somerford	...	...	Shakerley, Col. Sir Walter, Bart., C.B.E.
Vaynol	...	...	Duff, Sir Michael, Bart.
Wilcote	...	...	Dawkins, George H.
Winkhurst	...	...	Bohrmann, A. H. L.
Woburn	...	...	Bedford, The Duke of, K.G.
Woodbastwick	...	...	Cator, John
Woodrooffe	...	...	Major E. Sydney Woodiwiss

# AWARDS AT SHOWS.

1922.

## CAMBRIDGE (R.A.S.E.).

### HORNED.

#### Owner.

*Bulls* ... 1 Solva Snowstorm 79 ... The Lord Dynevor  
 2 Woburn Young Chartley  
 V. 101... ... Sir Claud Alexander, Bart.

*Cows* ... 1 Dynevor Dahlia 34 ... The Lord Dynevor  
 2 Dynevor Cowslip 28 ... The Lord Dynevor  
 3 Faygate Swop II. 74 ... Sir Claud Alexander, Bart.

### POLLED.

*Bulls* ... 1 St. Osyth Rex 133 ... Brig.-Gen. Kincaid Smith  
 2 Woodbastwick Petrarch  
 139 — ... John Cator  
 3 Bawdeswell Elk 111 ... Buxton and Birkbeck

*Cows* ... 1 Woodbastwick Junket  
 II. 378 ... John Cator  
 2 Northrepps Primula 580 Major Gurney  
 3 Woodbastwick Jasper  
 III. 610 ... Brig.-Gen. Kincaid Smith

# TRANSFERS.

## HORNED.

### BULLS.

Faygate Matthias 71, from Sir Claud Alexander, Bart., to the Duke of Bedford, K.G.

Solva Snowstorm 79, from Captain J. H. Howell to The Lord Dynevor.

Woburn Young Chartley V. 101, from The Duke of Bedford, K.G., to Sir Claud Alexander, Bart.

### Cow.

Poynetts Fairy 90, from Alfred H. Cocks to A. H. L. Bohrmann.

## POLLED.

### BULL.

Bawdeswell Elder, from Major Q. E. Gurney to Buxton and Birkbeck.

### Cows.

Bawdeswell Linnet 522, from Major Q. E. Gurney to Buxton and Birkbeck.

Bawdeswell Peewit 192, from Major Q. E. Gurney to Major E. Sydney Woodiwiss.

Bawdeswell Topknot II. 202, from Major Q. E. Gurney to Mrs. R. Gurney.

Faygate Alba 226, from Sir Claud Alexander, Bart., to Major Q. E. Gurney.

Faygate Disgrace, from Sir Claud Alexander, Bart., to A. H. L. Bohrmann.

Faygate Heads 230, from Sir Claud Alexander, Bart., to Major E. Sydney Woodiwiss.

Faygate Rose of Lancaster 232, from Sir Claud Alexander, Bart., to Major E. Sydney Woodiwiss.

name or prefix without assigning a reason. A prefix must be registered when a Member first desires to make an entry in the Herd Book, and the charge will be one guinea.

5. Every calf must be registered before February 1st in the year following its birth, otherwise it will not be eligible for entry in the Herd Book, except by special permission of the Council.

This Rule does not apply to calves born in the wild herds.

6. The bona-fide owner of the cow at the time she calves shall be the breeder of the calf.

When a cow has been served by more than one bull the names of all must be given.

7. The transfer of any registered animal may be recorded on payment of a fee of 5s. No animal bred from a transferred bull or cow will be accepted for registration, unless the transfer of such bull or cow has been registered in the books of the Society.

# PARK CATTLE SOCIETY.

## Rules and STANDARD

(Coloration and Conformation)

GOVERNING THE

Exhibition, Inspection, Description  
and Judging

OF

PARK CATTLE.

### CONDITION OF EXHIBITS, ETC.

S 1.—No cattle are eligible to be exhibited as "PARK," unless registered, or entered and accepted for registration, in the Park Cattle Society's Herd Book.

S 2.—Park cattle must be entered for exhibition under their registered name with Herd Book reference, and the Exhibitor must be the owner and shall be responsible for the identification and description of exhibits.

S 3.—Dehorned cattle are not eligible to be exhibited as "polled," and cattle with "snags" ("scurs") or "rudimentary horns" are not eligible to be exhibited as "horned."

N.B.—(i) "Snags" ("scurs") are horny substances on skin in the positions of the horns of horned cattle. These are also known as "slugs."

(ii) "Rudimentary horns" are horn-core substances on skull in the positions of the horns of horned cattle. These are also known as "abortive horns."

S 4.—Park cattle are not eligible to be exhibited as, or presumably intended to be, *Breeding Stock*, when (a) deformed, (b) sterilized, (c) a hermaphrodite, (d) having defective, deformed or ruptured genitals, (e) a bull over 30 months old that is not the sire of living progeny, (f) a female of unproved fertility that is twin to a bull, (g) a female over 30 months old that is neither in-calf nor in-milk, (h) a female in-milk but not in-calf eight months after last calving.

S 5.—Park cattle whose coloration has in any way been "faked" (i.e., artificially altered from natural state), and/or who are in any way exhibited in a fraudulent condition, shall be disqualified and the judge shall notify the Council of the Park Cattle Society of the fact of such disqualification.

S 6.—Park Bulls are not eligible for exhibition in "Park Cattle" (breeding stock) Classes unless they have the generally recognised "Park" markings, viz.: a combination of dark muzzle, ears, pupil of eyes and fore-fetlock "points" in their coloration. (For minimum marking, see Diagram 3.)

#### MARKS TO BE AWARDED FOR PRIZES.

S 7.—To individual animals shall be awarded (according to merit) any number of marks up to 50 for Coloration;  
and 50 for Conformation.

#### "MILK" AND "UDDER CAPACITY" MARKS.

S 8.—In addition to the above, marks shall be awarded for:—

(a) The "MILK" in the breeding of BULLS (any age) and HEIFERS (maiden or uncalfed):—

5 marks: when *dam* has been entered, or is accepted for entry, in the "Register of Dairy Cattle" of the Ministry of Agriculture and Fisheries.

10 marks: when the *dam and sire's dam* have been entered, or accepted for entry, in the "Register of Dairy Cattle" of the Ministry of Agriculture and Fisheries.

(b) The "UDDER CAPACITY" of COWS: which shall be tested by one milking to be made at time of judging, in judging ring or at such place as the judge may direct (where the milk shall be weighed):—

1 mark	Cows under 3 years old, after deducting the first
for every	7 lbs. of milk yielded.
1 lb. of	Cows under 4 years old, after deducting the first
milk from	14 lbs. of milk yielded.
	Cows over 4 years old, after deducting the first
	21 lbs. of milk yielded.

(NOTE.—The Committee of the Park Cattle Society responsible for Show arrangements may provide for other forms of milking-tests (or trials) in lieu of "Udder-Capacity" tests, or may eliminate any such form of milking test for cows, as the circumstances of the occasion may warrant; but any such deviation from Rule S 8 shall be communicated to exhibitors at time of soliciting show entries, or not less than three weeks prior to the date of Show).

S 9.—No cow with an "overstocked" udder (i.e., with milk in udder in excess of dry-carrying capacity) is eligible to be judged or milked for "udder capacity" or any other milking test. Cows must be able to walk and stand without losing milk. Cows not complying with this condition shall be so partly milked (to rectify the defect) as the judge may direct prior to any "udder-capacity" or other milking test. (Failure to comply with this condition shall disqualify a cow from an award of Marks under Rule S 8.)

#### JUDGING PROCEDURE AND AWARD OF MARKS.

S 10.—When exhibited Park Cattle are judged for the award of marks (for prizes), they shall first be judged for *Coloration*, and have 50 or any less number of marks awarded according to individual merit. They shall then be judged for *Conformation* and have 50 or any less number of marks awarded according to merit. Their "milk" or "udder capacity" marks (if any) shall then be ascertained. The animals shall be "placed" and prized according to their individual highest *total* number of marks gained.

#### JUDGING NOTE.

As the Coloration of Park Cattle includes so many minor variations, it has been necessary to extend the Standard beyond the limits usual with such delineations.

The "perfect" (or "ideal") coloration aimed at is noted in Rule S 11, and the generally recognised "Park" marking is the combination (irrespective of other markings) of "points" rendering bulls eligible for exhibition under Rule S 6.

When prizing Park Cattle, judges are advised to consider the coloration of the *whole* animal, awarding the maximum number of marks only to those having "full-marking" (*i.e.*, of "perfect coloration"); deducting a few marks for any small deficiency, "under-marking," *allowed* variation, "over-marking," or minor "uneven-marking," and penalising more heavily any *undesirable* feature, "weak-marking," "excessive-marking," or serious "uneven-marking."

Regarding Conformation, the Standard is drawn up in the usual way, but, as regards the size and general appearance of animals, judges are solicited to take special note of Rules S 36, S 55 and S 76.

Judges are particularly requested to immediately take Veterinary Surgeon's advice on any doubtful matter that may arise under Rules S 4 and S 5.

#### STANDARD.

#### COLORATION.

*Maximum Judging Marks* ... 50.

N.B.—Not to apply to the cattle of wild herds which have retained their pristine purity but where, from natural or other causes, the pigmentation of the "points" has weakened or varied in recent times.)

S 11.—THE COLORATION OF PARK CATTLE is "*White with dark points.*"

N.B.—The "PERFECT" coloration is a white coat with full and clearly defined dark points, etc. (see diagram 1), without any "allowed" or other variations or markings.)

S 12.—THE COLOUR OF THE COAT (*i.e.*, hair) is white (except at such parts as are scheduled hereafter).

S 13.—WHITE includes "cream-white," "dun-white," "blue-white," and "grey-white."

S 14.—A DARK SKIN, or dark marks and/or spots on the skin, visible only when the coat is short or thin, is deemed not to detract from the white colour of the coat.

S 15.—VARIATIONS FROM WHITE, which are not such as to detract from the general white appearance of the coat, are *allowed* when a very faint "pink-rose," light "blue-grey," or similar, colour on head and neck, and/or a very slight admixture of such coloured hair anywhere.

S 16.—COAT-MARKINGS: The following dark markings on coat are *allowed* :—

- (a) A little dark shading on poll, and/or around base of horns.
- (b) Small marks and/or spots (or freckles) of dark shading on shoulders and/or neck and/or cheeks.
- (c) A few very small dark spots (or freckles) on neck and/or forward of the shoulder-point, and/or extending upwards from the fetlock points and/or on the poll.
- (d) A small triangular dark mark at base of buttock on back of each hind leg.

S 17.—ADDITIONAL COAT MARKINGS — though *undesirable* — are allowed, providing they do not seriously detract from the general white appearance of the coat, when :—

- (a) Small marks and/or spots (or freckles) of dark colour and/or dark shading on any part of the coat and/or in excess of such as are allowed under Rule S 16.
- (b) An occasional larger dark mark and/or spot on any part of an animal.

S 18.—SCROTUM AND UDDER.—The skin of a bull's scrotum and of a cow's udder is white (*re* tests, see Rule S 26 f). A few small dark spots on scrotum or udder are *allowed*.

S 19.—TAIL.—The skin and hair of the tail is white. The

S 20.—TAIL-TUFT, if dark or stained, is deemed to be white.

#### POINTS :—

S 21.—THE COLOUR OF THE POINTS is dark.

S 22.—DARK includes black, blue-black, red, brown, dark-grey, dark-"yellow," "plum," "dark-dun," and all mixtures of these.

S 23.—VARIATIONS FROM DARK, which are not such as to detract from the general dark appearance of the Points, are *allowed* when they take the form of a very faint admixture of white and/or light-coloured hair or minute markings.



S 24.—ALL POINTS are clearly defined ("broken") from, and not blended (by graduated shading, "roan," etc.) with, the white coat. Blended points are allowed, but are *undesirable*.

S 25.—ALL POINTS AND COAT-MARKINGS on the right side and all Points and Coat-Markings on the left side of an animal are alike. When not alike is described as "UNEVEN-MARKING."

S 26.—SCHEDULE OF POINTS :—

- (a) NOSE.—The entire skin of the nose and nostrils from and including upper lip to surrounding hair
- (b) MUZZLE.—A band of hair surrounding the nose,  $\frac{1}{2}$  to  $\frac{3}{4}$  inch wide on top and about  $1\frac{1}{2}$  inch wide on each side above upper lip. The band is immediately flanked (but not on top) with a few small spots or freckles (these not extending over face or cheeks).
- (c) CHIN, including under-lip : entire, but the underneath part of the chin may be white or freckled.
- (d) EYES.—Pupils, edge of eyelids (forming a complete dark rim round eye), eyelashes and eyebrows. (N.B. the eyebrows are a curved row of freckles with coarse hairs therefrom). The irises are white, but dark irises are *allowed*.
- (e) EARS.—Entire, or entire except two short white "splices" at the back (on both ears) from where the ears join the head.
- (f) TEATS.—The milking and supernumerary (if any) teats of cows and the "false" (or "rudimentary") teats of bulls. (re Scrotum and Udder, see Rule S 18).
- (g) FETLOCKS—FORE-LEGS.—A conical cluster of dense marks, spots or freckles, rising from immediately surrounding top of hoofs up the front of the leg to a point just below the knee.
- (h) FETLOCKS—HIND-LEGS.—A few marks, spots or freckles within about 6 inches of the hoofs. (NOTE.—The hind-leg fetlock "points" shall not exceed in expanse those of the fore-leg fetlocks on any individual animal.)
- (i) HOOFS AND DEW-CLAWS.—Entire. A few small buff marks or stripes are *allowed* if they do not detract from the dark appearance of the hoofs and dew-claws.

S 27.—THE HORNS of horned cattle may be any colour or combination of colours. (See NOTE REGARDING HEADS.)

DESCRIPTION OF COLORATION :—

S 28.—Coloration according to Standard is described as "FULL-MARKING."

S 29.—Variations of Coloration *much less* than Standard are described as "WEAK-MARKING."

S 30.—Variations of Coloration *less* than Standard are described as "UNDER-MARKING."

S 31.—Variations of Coloration *more* than Standard (see Rule S 16) are described as "OVER-MARKING."

S 32.—Variations of Coloration *much more* than Standard (see Rules S 16 and S 17) are described as "EXCESSIVE-MARKING."

S 23.—All white, black, or other form of coloration not to pattern of Standard is described as "MIS-MARKING."

(N.B.—For "uneven-marking" see Rule S 25.)

EXHIBITION AND INSPECTION :—

S 34.—For Exhibition and Inspection purposes, cattle are disqualified by "mis-marking."

S 35.—For Exhibition and Inspection purposes, cattle are *not* disqualified by :—

- (a) "Weak-marking," when part of the nose, a part of both ears and the pupils of the eyes are "dark."
- (b) "Under-marking."
- (c) "Over-marking."
- (d) "Excessive-marking," when this does not detract from the *pattern* of the Standard Coloration in markings and points.
- (e) "Uneven-marking," providing neither side is "mis-marked."

## STANDARD.

## CONFORMATION.

*Maximum Judging Marks* ... .. 50.

S 36.—PARK CATTLE shall be large and massive, dual-purpose, cattle of symmetrical appearance.

## BULLS.

S 37.—HEAD.—Masculine in character, not disproportionately big compared with the general size of the animal, hairy, carried well up and set firmly on neck. Eyes large and clear, with a bright expression. Ears well set up and hairy. Muzzle broad with expansive nostrils.

S 38.—NECK.—Strong, arched and muscular, of moderate length (not "thick-set;" or "swan") and good depth, well-covered with long hair extending on top over withers and blending with hair on head (i.e. forming a "mane").

S 39.—DEWLAP.—Deep and prominently developed from chin to base of breast.

S 40.—BREAST.—Broad and deep, and well-filled.

S 41.—WITHERS.—Strong and of medium width, not rising above arch of neck or falling below top-line, and well-filled fore and aft.

S 42.—SHOULDERS.—Sloping well forward, deep, and rounded to give the animal a "full" appearance; well-filled all round.

S 43.—BARREL.—Long, wide and deep, with ribs fully sprung and wide apart; not falling-in at flanks or behind shoulders, and full behind elbow.

S 44.—TOP-LINE.—Level from withers to root of tail.

S 45.—BACK.—Broad and expanding over loins to hips.

S 46.—HIPS.—Wide, well-filled and level with top-line.

S 47.—RUMP.—Long, broad, well-filled and with tail neatly set on level with top-line.

S 48.—HIND-QUARTERS.—Wide, deep and full.

S 49.—UNDER-LINE.—Level from breast between fore-legs to scrotum, giving animal a symmetrical appearance, but with a strong navel development.

S 50.—FALSE-TEATS.—Four, well developed, set horizontally, wide apart and away from the scrotum.

S 51.—"ESCUTCHEON."—Clearly defined from scrotum up between thighs.

S 52.—SKIN (HIDE).—Soft and flexible, with plenty of "substance," without being coarse or hard to the touch.

S 53.—HAIR (COAT).—Long, fine and soft, and of dense growth.

S 54.—FLESH.—Level, with an entire absence of "cushions," "hollows" or "unevenness." Well-filled and "firm" to the touch.

S 55.—LEGS.—Strong and muscular, straight and not "knuckling" inwards or "strutting" outwards when walking. LENGTH OF LEGS.—Medium; in proportion to the size of the animal the legs should be such as to avoid any semblance to an appearance of "shortness" or "longness" of leg-length.

S 56.—TAIL.—Fine and long, well-covered with hair and having a full tuft.

## COWS.

S 57.—HEAD.—Feminine in character, not disproportionately big compared with the general size of the animal, hairy, carried well up and set firmly on neck. Eyes large and clear with a bright and gentle expression. Ears well set up and hairy. Muzzle of medium width with expansive nostrils.

S 58.—NECK.—Straight or very slightly arched on top, of moderate length and strength (not "thick-set" or "swan") and good depth, covered on top with long hair extending from top of withers to poll (i.e. forming a modified "mane.")

- S 59.—DEWLAP.—Deep and prominently developed from chin to base of breast.
- S 60.—BREAST.—Broad and deep, and well-filled.
- S 61.—WITHERS.—Of moderate strength and width, not rising appreciably above level of neck and not falling below top-line; well-filled fore and aft.
- S 62.—SHOULDERS.—Sloping well forward, deep, and rounded to give the animals a "full" appearance; well-filled all round.
- S 63.—BARREL.—Long, wide and deep with ribs fully sprung and wide apart; not falling in at flanks or behind shoulders, and full behind elbow.
- S 64.—TOP-LINE.—Level from withers to root of tail.
- S 65.—BACK.—Broad and expanding over loins to hips.
- S 66.—HIPS.—Wide, well-filled and level with top-line.
- S 67.—RUMP.—Long, broad, well-filled and with tail neatly set on level with top-line.
- S 68.—HIND-QUARTERS.—Wide, deep and full.
- S 69.—UNDER-LINE.—Level from breast between fore-legs to udder, giving animal a symmetrical appearance, but with a strong navel development and very prominent "milk"-veins.
- S 70.—UDDER.—Of large capacity and of full and symmetrical appearance, extending high up and hanging almost perpendicularly at the back, level at the base, and coming well forward on the belly; not "split-up" between quarters; limp and not "fleshy" when milked out; skin very thin and "silky" to the touch; pronounced "milk"-veins.
- S 71.—TEATS.—Four milking teats of good and even size and straight shape, squarely placed and wide apart and hanging in a even perpendicular position. All supernumerary teats are undesirable and any between, forward of, or interfering with, the 4 milking teats to be strongly depreciated.

- S 72.—"ESCUTCHEON."—Even, high, wide, and well defined.
- S 73.—SKIN (HIDE).—Fine, soft and flexible to the touch.
- S 74.—HAIR (COAT).—Long, fine and soft, and of dense growth.
- S 75.—FLESH.—Level, with an entire absence of "cushions," "hollows" or "unevenness." Well-filled and "firm" to the touch.
- S 76.—LEGS.—Moderately fine, straight and not "knuckling" inwards or "strutting" outwards when walking. LENGTH OF LEGS.—Medium; in proportion to the size of the animal the legs should be such as to avoid any semblance to an appearance of "shortness" or "longness" of leg-length.
- S 77.—TAIL.—Fine and long, with a full tuft. (N.B.—The hair on the tail—except the tuft—may be clipped.)

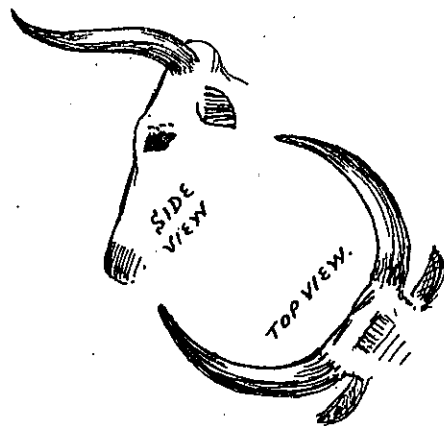
#### HEIFERS.

- S 78.—THE CONFORMATION OF YOUNG HEIFERS.—*Same as Cows*, except :—
- Rule S 69.—"Under-line."—Omit the words "and very prominent milk-veins".
  - Rule S 70.—"Udder."—Omit the words from "of large capacity" to "when milked out", and the words "pronounced milk-veins."
  - Rule S 71.—"Teats."—After "Teats," insert the words "promising to develop into".
- S 79.—THE CONFORMATION OF IN-CALF HEIFERS.—*Same as Cows*, except :—
- Rule S 69.—"Under-line."—After "development and" insert the words "indications of".
  - Rule S 70.—"Udder."—After "Udder" insert the words "promising to develop into one".
  - Rule S 71.—"Teats."—After "Teats" insert the words "promising to develop into".

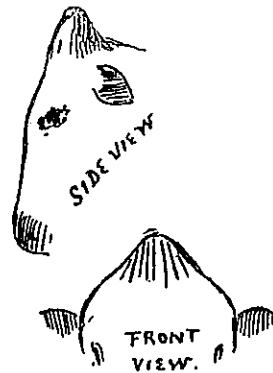
## NOTE REGARDING HEADS.

Owing to the small numbers of Park Cattle, and the variations still resulting from the old "herd" system of breeding, standardisation of the Horned and Polled state has been deferred for the present, but breeders are advised that it is *desirable* that:—

- (1) **HORNED CATTLE** have horns of moderate length, of equal and horizontal direction of growth, curving forward after the pattern of the extinct *Urus*, and of "light buff with dark tips" coloration.
- (2) **POLLED CATTLE** have totally hornless heads (without any "snags" or "rudimentary horns") with a prominent conical poll (i.e., high "peak" on top of head) not protruding in a forward direction over the plane of the fore-head (*frons*).



"URUS" HORNS.



HIGH "PEAK" POLL.

## PARK CATTLE.

### COLORATION DIAGRAMS.

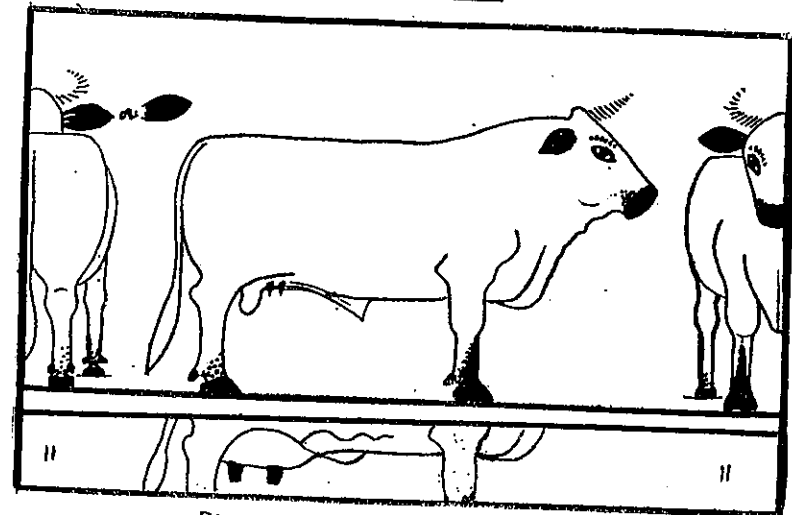
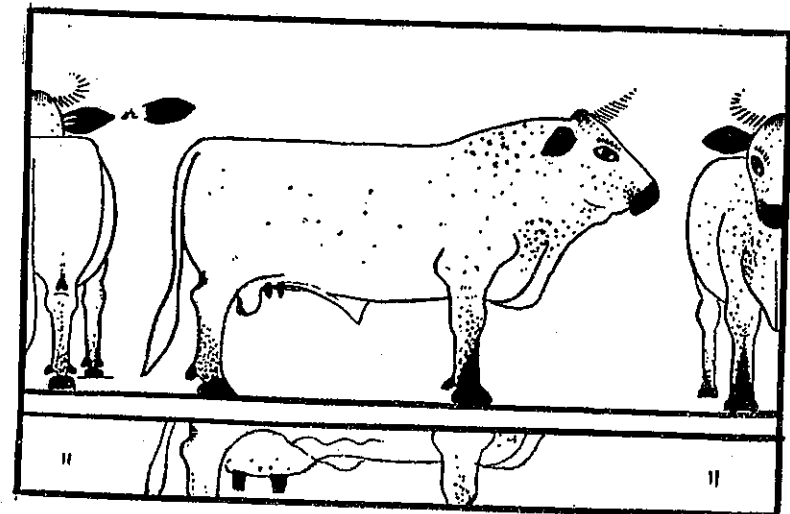
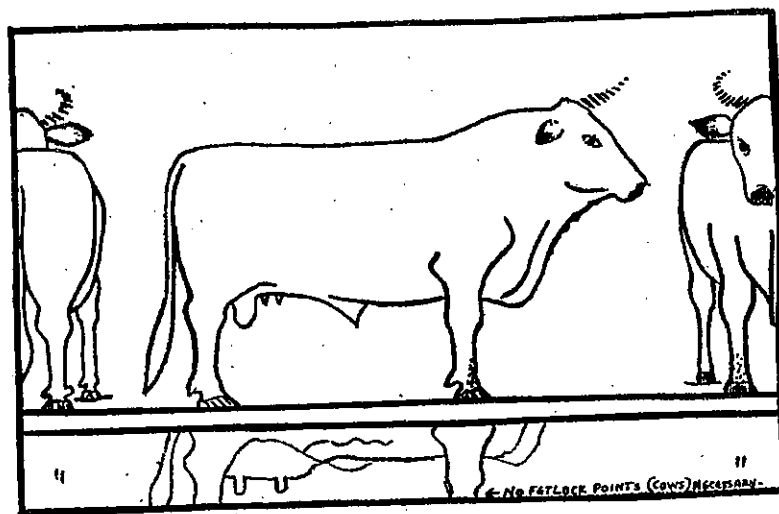


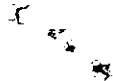
Diagram of Points. P.C.S. Standard.  
"Perfect" Coloration.



"Over-Marking."



"Weak-Marking."



22

