

WOBURN MATTHIAS 28TH 505.
1st R.A.S.E. (Ipswich) 1934.
Owner and Breeder : THE DUKE OF BEDFORD, K.G.

THE PARK CATTLE SOCIETY'S HERD BOOK.

VOLUME IX.

1934.

Printed by:
W. E. BAXTER LTD., PRINTERS, 34 AND 35, HIGH STREET.



THE PARK CATTLE SOCIETY.

President :

THE DUKE OF BEDFORD, K.G.

Vice-President.

THE DUKE OF HAMILTON.

Council :

SIR CLAUD ALEXANDER, Bart.	THE LORD DYNEVOR.
MISS ALEXANDER.	MRS. QUINTIN GURNEY.
C. R. BIRKBECK.	LANGLEY HOBBS.
WALTER BUXTON.	BRIG.-GEN. K. KINCAID SMITH, C.B.
JOHN CATOR.	A. H. WINGFIELD.
CAPTAIN H. J. CATOR, M.C.	SAM WOODIWISS.

Executive Committee :

JOHN CATOR.	MRS. QUINTIN GURNEY.
THE LORD DYNEVOR.	LANGLEY HOBBS.
MAJOR GURNEY.	SAM WOODIWISS.

Hon. Treasurer : MAJOR GURNEY.

Secretary : G. A. MYHILL,
Hall Farm,
Bawdeswell,
E. Dereham,
Norfolk.



17

THE PARK CATTLE SOCIETY.

LIST OF MEMBERS.

- Alexander, Miss, Faygate Wood, Sussex.
 Alexander, Sir Claud, Bart., Faygate Wood, Sussex.
 Assheton-Smith, Sir Michael, Bart., Vaynol Park, Bangor, N. Wales.
 Bedford, The Duke of, K.G., Woburn Abbey, Bletchley.
 Birkbeck, C. R., Estate Office, Cottishall, Norwich.
 Birkbeck, Lt.-Colonel Oliver, Lt. Massingham House, Kings Lynn, Norfolk.
 Buxton, Walter, Bolwick, Marsham, Norwich.
 Cator, Captain H. J., M.C., Ranworth Hall, Norwich.
 Cator, John, Woodbastwick Hall, Norwich.
 Clarke, G. R. F., Heron Farm, Besthorpe, Attleborough.
 Ducker, N. B., Littlestoke Manor, North Stoke, Oxford.
 Dynevor, The Lord, Dynevor Castle, Llandilo, S. Wales.
 Fry, Captain W. M., Woolferton House, Sporle, King's Lynn.
 Gurney, Mrs. Quintin, Bawdeswell Hall, Norfolk.
 Gurney, Major Quintin, Bawdeswell Hall, Norfolk.
 Hamilton, The Duke of, Hamilton Palace, Lanarkshire.
 Hobbs, Langley, Victoria House, Southampton Row, London, W.C.1.
 Howell, Captain J. H., M.C., Trewellwell, Solva, Pembrokeshire.
 Kincaid Smith, Brigadier-General K., C.B., C.M.G., D.S.O., St. Osyth's Priory, Clacton-on-Sea.
 Lancaster, Captain C. G., Kelmarsh Hall, Northampton.
 Nixon, W., Great Pinley, Claverdon, Warwick.
 Tabor, Colonel J. C., Trewsbury, Cirencester, Glos.
 Wigan, Sir Roderick, Bart., Horstead Hall, Norwich.
 Wingfield, A. H., Ampthill House, Ampthill.
 Woodiwiss, Sam., Sedgemere, Great Waltham, near Chelmsford.
 Youngs, A. J., Hall Farm, Hemblington, Norwich.

Since the publication of Volume VIII., there has been further evidence of the good milking qualities of the breed and worthy of mention is the average of the Bolwick Herd of 8,776 lbs. per cow for thirteen years, and an average of 7,861 lbs. per cow of the Bawdeswell Herd for sixteen years. Among individual yields meriting special mention is that of Bawdeswell Catmint; she gave 13,876½ lbs. in 326 days, and obtained a certificate of merit, with a yield of 35,928½ lbs. in three years.

G. A. MYHILL,

Secretary.

PHOTOGRAPHS.

Woburn Matthias 28th 505	<i>facing page</i>	1
Woburn Pyaura 4th 2080	"	29
Part of the Herd at Bawdeswell, owned by Major Q. E. Gurney	"	33
Giffords Toplady 1566	"	47

Notes on the Numbers, etc., of the Herds.

WILD HERDS.

THE CADZOW HERD.

Owner: The Duke of Hamilton, Hamilton Place, Lanarkshire.

In Volume VIII. the numbers were 21; the census now records 4 bulls, 2 bull calves, 16 cows and 5 heifer calves, an increase of 6 head.

THE CHILLINGHAM HERD.

Owner: The Earl of Tankerville, Chillingham Castle, Belford, Northumberland.

This herd now consists of 39 head, namely 11 bulls over 2 years old, 4 yearlings, 14 cows, 8 heifers and 2 calves; in Volume VIII. it numbered 36.

THE VAYNOL HERD.

Owner: Sir Michael Assheton-Smith, Bart., Vaynol Park, Bangor, N. Wales.

The present computation of this herd is 23 head, namely 1 aged bull, 2 two-year-old, 2 yearlings, 14 cows and heifers, and 4 calves, which compares with a total of 37 in Volume VIII.

HORNED HERDS.

THE AMPHILL HERD.

Owner : A. H. Wingfield, Amptill House, Amptill.

This herd now numbers 2 bulls, 4 cows and 2 heifer calves, whereas it contained 6 head in Volume VIII.

THE CHARTLEY HERD (at Woburn).

Owner : The Duke of Bedford, K.G., Woburn Abbey, Bletchley.

A considerable increase is recorded in this herd. The entries in Volume VIII. were 19 bulls and 28 cows and heifers ; whereas the recent census show 24 bulls and 36 cows and heifers ; an increase of 13 animals.

THE DYNEVOR HERD.

Owner : The Lord Dynevor, Dynevor Castle, Llandilo, S. Wales.

There is very little change in this herd ; the census contains 4 bulls, 42 cows and heifers, and 8 heifer calves, making a total of 54, which compares with 52 head in the previous volume.

THE FAYGATE HERD.

Owner : Sir Claud Alexander, Bart., Faygate Wood, Sussex.

The horned section of this herd again shows a slight increase, there being at present 3 cows and 9 heifers, while 1 bull and 9 cows and heifers are recorded in Volume VIII.

THE SEDGEMERE HERD.

Owner : Sam Woodiwiss, Sedgemere, Great Waltham, near Chelmsford.

The horned section of this herd is now represented by 1 bull and 3 cows.

THE SOLVA HERD.

Owner : Captain J. H. Howell, M.C., Trewellwell, Solva R.S.O.,
Pembrokeshire.

This herd now consists of 1 bull and 8 cows and heifers.

POLLED HERDS.**THE BAWDESWELL HERD.**

Owner : Major Q. E. Gurney, Bawdeswell Hall, Norfolk.

The present figures exceed those of any previous year, making a total of 88, namely 8 bulls, 70 cows and heifers, and 10 heifer calves ; this compares with a return of 86 in Volume VIII.

THE BOLWICK HERD.

Owners : Walter Buxton and C. R. Birkbeck.

This herd at present contains 5 bulls, 31 cows and heifers, and 8 heifer calves, making a total of 44, whereas in Volume VIII. it numbered 40.

THE FAYGATE HERD.

Owner : Sir Claud Alexander, Bart. Faygate Wood, Sussex.

There is now 1 bull, 2 cows, and 1 bull calf in the polled section of this herd.

THE KELMARSH HERD.

Owner : Captain C. G. Lancaster, Kelmarsh Hall, Northampton.

This herd is represented by 2 bulls, 12 cows and 15 heifers, which compares with 27 head in Volume VIII.

THE LITTLESTOKE HERD.

Owner : N. B. Ducker, Littlestoke Manor, North Stoke, Oxford.

This new herd is represented by 1 cow calf acquired from the Faygate Herd.

THE RANWORTH HERD.

Owner : Captain H. J. Cator, M.C., Ranworth Hall, Norwich.

The census shows a further increase ; it contains 15 cows and heifers, whereas in the previous volume it numbered 8.

THE ST. OSYTH HERD.

Owner : Brigadier-General K. Kincaid Smith, C.B., St. Osyth's Priory, Clacton-on-Sea.

There is no change in the census ; the present numbers are 1 bull, 14 cows and 16 heifers.

THE SEDGEMERE HERD.

Owner : Sam Woodiwiss, Sedgemere, Great Waltham, near Chelmsford.

The polled section of this herd consists of 1 cow.

THE WOODBASTWICK HERD.

Owner : John Cator, Woodbastwick Hall, Norwich.

A further small increase is to be recorded in this herd which numbers 2 bulls, 34 cows and heifers, and 8 calves, making a total of 44, which compares with 42 head in Volume VIII.

Register of the Horned Herds.

THE AMPHILL HERD.

Owner—A. H. WINGFIELD.

Amphill House, Amphill.

BULL.

AMPHILL WHITE MUSCAT 575 I.F.S.,

White with black points, calved February 24, 1934 ; breeder, Earl Bathurst ;

Sire, Black Prince, a Gloucester bull,

Dam, Mother Goose, by Arctic Solva 265.

COWS.

AMPHILL BLACK HAMBRO 2312,

Black, calved January 10, 1934 ; breeder A. H. Wingfield ;

Sire, Solva Arctic Star 427,

Dam, Faygate Primrose 428.

AMPHILL MAY 2314,

White with black points, calved October 8, 1933 ; breeder A. H. Wingfield ;

Sire, Solva Arctic Star 427,

Dam, Amphill Catalpa 2002.

THE DYNEVOR HERD.

Owner—THE LORD DYNEVOR,

Dynevor Castle, Llandilo, S. Wales.

BULLS.

DYNEVOR CROMWELL 577,

White with black points, calved June 24, 1934; breeder, The Lord Dynevor;

Sire, Woburn Pykent 2nd 447,

Dam, Dynevor Quorum 2028.

DYNEVOR PROSPECT 579,

White with black points, calved June 15, 1934; breeder, The Lord Dynevor;

Sire, Woburn Pykent 2nd 447,

Dam, Dynevor Marigold 1384.

COWS.

DYNEVOR SABLE 2316,

White with black points, calved June 23, 1933; breeder, The Lord Dynevor;

Sire, Woburn Pykent 2nd 447,

Dam, Dynevor Osier 1692.

DYNEVOR SALLY 2318,

White with black points, calved April 3, 1933; breeder, The Lord Dynevor;

Sire, Dynevor Bangor 259,

Dam, Dynevor Molly 1402.

DYNEVOR SARAH 2320,

White with black points, calved April 14, 1933; breeder, The Lord Dynevor;

Sire, Solva Candle 429,

Dam, Dynevor Picture 1708.

DYNEVOR SATIN 2322,

White with black points, calved November 13, 1933; breeder, The Lord Dynevor;

Sire, Woburn Pykent 2nd 447,

Dam, Dynevor Hazel 648.

DYNEVOR SEAL 2324,

White with black points, calved March 28, 1933 ; breeder, The Lord Dynevor ;
Sire, Woburn Pykent 2nd 447,
Dam, Dynevor Oracle 1684.

DYNEVOR SHABLY 2326,

White with black points, calved May 3, 1933 ; breeder, The Lord Dynevor ;
Sire, Dynevor Bangor 259,
Dam, Dynevor Iceberg 822.

DYNEVOR SIGNET 2328,

White with black points, calved November 2, 1933 ; breeder, The Lord Dynevor ;
Sire, Woburn Pykent 2nd 447,
Dam, Dynevor Narcissus 1414.

DYNEVOR SILVER 2330,

White with black points, calved September 17, 1933 ; breeder, The Lord Dynevor ;
Sire, Solva Candle 429,
Dam, Dynevor Nimble 1424.

DYNEVOR SODA 2332,

White with black points, calved April 26, 1933 ; breeder, The Lord Dynevor ;
Sire, Woburn Pykent 2nd 447,
Dam, Dynevor Pride 1722.

DYNEVOR SPECKLEY 2334,

White with black points, calved June 7, 1933 ; breeder, The Lord Dynevor ;
Sire, Woburn Pykent 2nd 447,
Dam, Dynevor Katinka 1092.

DYNEVOR SPLENDID 2336,

White with black points, calved May 19, 1933 ; breeder, The Lord Dynevor ;
Sire, Woburn Pykent 2nd 447,
Dam, Dynevor Marigold 1384.

DYNEVOR STORM 2338,

White with black points, calved May 24, 1933 ; breeder, The Lord Dynevor ;
Sire, Woburn Pykent 2nd 447,
Dam, Dynevor Lute 1116.

DYNEVOR TACT 2340,

White with black points, calved June 7, 1934 ; breeder, The Lord Dynevor ;
Sire, Woburn Pykent 2nd 447,
Dam, Dynevor Quality 2010.

DYNEVOR TIDY 2342,

White with black points, calved June 28, 1934 ; breeder, The Lord Dynevor ;
Sire, Solva Candle 429 .
Dam, Dynevor Papyrus 1702.

DYNEVOR TROUT 2344,

White with black points, calved October 6, 1934 ; breeder, The Lord Dynevor ;
Sire, Woburn Pykent 2nd 447,
Dam, Dynevor Planet 1714.

DYNEVOR TULIP 2346,

White with black points, calved May 22, 1934 ; breeder, The Lord Dynevor ;
Sire, Woburn Pykent 2nd 447,
Dam, Dynevor Lute 1116.

THE FAYGATE HERD.

Owner—SIR CLAUD ALEXANDER, Bart.,

Faygate Wood, Sussex.

BULL

FAYGATE KING CAROL 581,

White with black points, calved February 19, 1933; breeder, Sir
Claud Alexander, Bart.;

Sire, Amphill Canute 417,

Dam, Faygate Sappho 1736 I.F.S.

COWS.

FAYGATE BIRTHDAY 2348,

White with red points, calved May 24, 1933; breeder, Sir Claud
Alexander, Bart.;

Sire, Amphill Canute 417,

Dam, Faygate Beda 1124.

FAYGATE CALYPSO 2350 I.F.S.,

White with black points, calved March 10, 1934; breeder, Sir
Claud Alexander, Bart.;

Sire, Amphill Canute 417,

Dam, Maggie.

FAYGATE CAPER SAUCE 2352,

White with red points, calved March 27, 1934; breeder, Sir Claud
Alexander, Bart.;

Sire, Amphill Canute 417,

Dam, Faygate Apple Sauce 1122.

FAYGATE CAMEL SAUCE 2354,

White with black points, calved July 25, 1933; breeder, Sir Claud
Alexander, Bart.;

Sire, Amphill Canute 417,

Dam, Faygate Saucy 1546.

FAYGATE GLACE 2356 I.F.S.,

White with black points, calved April, 1934; breeder, Earl Bathurst;

Sire, a Gloucester bull,

Dam, Ice Pudding, by Solva Arctic 265.

FAYGATE RASPBERRY 2358 I.F.S.,

White with black points, calved 1933; breeder, Earl Bathurst;

Sire, Ciceter Champion,

Dam, Snowberry, by Solva Arctic 265,

FAYGATE SIREN 2360,

White with black points, calved February 26, 1934; breeder, Sir Claud Alexander, Bart.;

Sire, Ampthill Canute 417,

Dam, Faygate Sappho 1736 I.F.S.

THE SEDGEMERE HERD.

Owner—SAM WOODIWISS,

Sedgemere, Great Waltham, near Chelmsford.

COW.

SEDGEMERE PUSSYFOOT 2362 I.F.S.,

White with red points, calved March 11, 1934; breeder, Sam Woodiwiss;

Sire, a Shorthorn bull,

Dam, Sedgemere Lilyfoot 2278 I.F.S.

THE CHARTLEY HERD (at Woburn).

Owner—THE DUKE OF BEDFORD, K.G.,

Woburn Abbey, Bletchley.

BULLS.

WOBURN MARK 1st 583,

White with black points, calved June 6, 1934; breeder, The Duke of Bedford, K.G.;

Sire, Woburn Matthias 30th 509,

Dam, Woburn Chartley 11th 1480.

WOBURN MARK 4th 585,

White with black points, calved July 30, 1934; breeder, The Duke of Bedford, K.G.;

Sire, Woburn Matthias 30th 509,

Dam, Woburn Pylatona 2nd 1788.

WOBURN MATTHIAS 31st 587,

White with black points, calved June 31, 1933; breeder, The Duke of Bedford, K.G.;

Sire, Woburn Matthias 22nd 443,

Dam, Woburn Pylatona 2nd 1788.

WOBURN PERFECTION 17th 589 (*Twin to a bull*),

Black, calved March 30, 1933; breeder, The Duke of Bedford, K.G.;

Sire, Woburn Perfection 13th 355,

Dam, Woburn Pyona 4th 1496.

WOBURN PERFECTION 18th 591 (*Twin to a bull*),

Black, calved March 30, 1933; breeder, The Duke of Bedford, K.G.;

Sire, Woburn Perfection 13th 355,

Dam, Woburn Pyona 4th 1496.

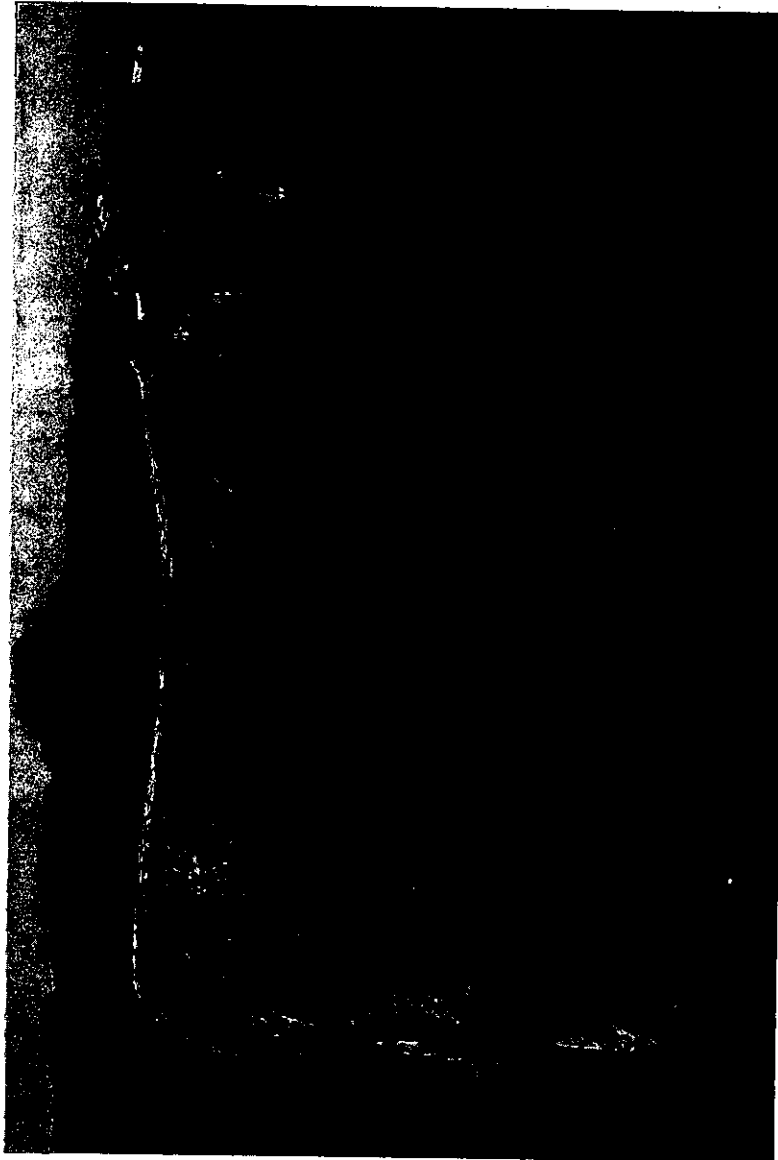
WOBURN PERFECTION 20th 593,

White with black points, calved June 21, 1934; breeder, The Duke of Bedford, K.G.;

Sire, Woburn Perfection 13th 355,

Dam, Poynetts Judy 684.

WOBURN PYAURA 4TH 2080.
Owner and Breeder: THE DUKE OF BEDFORD, K.G.



WOBURN PERFECTION 21st 595,

White with black points, calved June 29, 1934 ; breeder, The Duke of Bedford, K.G. ;

Sire, Woburn Perfection 13th 355,

Dam, Woburn Pylaura 2nd 1792.

WOBURN PYKENT 13th 597,

White with black points, calved May 29, 1934 ; breeder, The Duke of Bedford, K.G. ;

Sire, Woburn Pykentigern I. 281,

Dam, Woburn Buckingham XXX. 1174.

WOBURN PYKING 599,

Black, calved May 17, 1934 ; breeder, The Duke of Bedford, K.G. ;

Sire, Woburn Pykent 5th 519,

Dam, Woburn Buckingham XXXV. 1180.

WOBURN PYKING 2nd 601,

Black, calved June 10, 1934 ; breeder, The Duke of Bedford, K.G. ;

Sire, Woburn Pykent 5th 519,

Dam, Woburn Pyar 2074.

WOBURN PYKING 3rd 603,

White with black points, calved June 12, 1934 ; breeder, The Duke of Bedford, K.G. ;

Sire, Woburn Pykent 5th 519,

Dam, Woburn Buckingham 53rd 1774.

WOBURN TURK 605,

White with black points, calved May 29, 1933 ; breeder, The Duke of Bedford, K.G. ;

Sire, Dynevor Sultan 421,

Dam, Poynetts Juno 688.

WOBURN TURK 2nd 607,

White with black points, calved July 18, 1933 ; breeder, The Duke of Bedford, K.G. ;

Sire, Dynevor Sultan 421,

Dam, Woburn Pyona 5th 1794.

COWS.

WOBURN BUCKINGHAM 57th 2364,

White with black points, calved April 21, 1933 ; breeder, The Duke of Bedford, K.G. ;

Sire, Woburn Pykentigern I. 281,

Dam, Woburn Buckingham XXX. 1174.

WOBURN BUCKINGHAM 58th 2366,

White with black points, calved May 5, 1933 ; breeder, The Duke of Bedford, K.G. ;

Sire, Dynevor Sultan 421,

Dam, Woburn Buckingham 53rd 1774.

WOBURN BUCKINGHAM 59th 2368,

White with black points, calved May 13, 1933 ; breeder, The Duke of Bedford, K.G. ;

Sire, Dynevor Sultan 421,

Dam, Woburn Buckingham XXXV. 1180.

WOBURN BUCKINGHAM 60th 2370,

White with black points, calved June 12, 1933 ; breeder, The Duke of Bedford, K.G. ;

Sire, Dynevor Sultan 421,

Dam, Woburn Buckingham 49th 1766.

WOBURN BUCKINGHAM 61st, 2372,

White with black points, calved June 16, 1934 ; breeder, The Duke of Bedford, K.G. ;

Sire, Woburn Matthias 30th 509,

Dam, Woburn Buckingham 56th 2066.

WOBURN BUCKINGHAM 62nd 2374,

White with black points, calved July 5, 1934 ; breeder The Duke of Bedford, K.G. ;

Sire, Woburn Matthias 30th 509,

Dam, Woburn Buckingham 54th 2062.

WOBURN CHARTLEY 14th 2376,

White with black points, calved April 15 1933 ; breeder The Duke of Bedford K.G. ;

Sire, Dynevor Sultan 421,

Dam, Woburn Chartley 11th 1480.

WOBURN DORIS 9th 2378,

White with black points, calved June 9, 1934 ; breeder, The Duke of Bedford, K.G. ;

Sire, Woburn Matthias 30th 509,

Dam, Woburn Doris 8th 2070.

WOBURN PYAR 3rd 2380,

White with black points, calved May 30, 1934 ; breeder, The Duke of Bedford, K.G. ;

Sire, Woburn Matthias 30th 509,

Dam, Woburn Pyona 4th 1496.

WOBURN PYAURA 5th 2382,

White with black points, calved May 2, 1934 ; breeder, The Duke of Bedford, K.G. ;

Sire, Woburn Pykent 5th 519,

Dam, Woburn Pyaura 1196.

WOBURN PYGÆA 4th 2384,

White with black points, calved September 10, 1933 ; breeder, The Duke of Bedford, K.G. ;

Sire, Woburn Pykentigern I. 281,

Dam, Poynetts Gæa 436.

WOBURN PYJAM 2386,

White with black points, calved April 27, 1933 ; breeder, The Duke of Bedford, K.G. ;

Sire, Dynevor Sultan 421,

Dam, Woburn Pyjudy 2nd 1786.

WOBURN PYJAM 2nd 2388,

White with black points, calved June 16, 1934 ; breeder, The Duke of Bedford, K.G. ;

Sire, Woburn Matthias 30th 509,

Dam, Woburn Pyjudy 2nd 1786.

WOBURN PYONA 7th 2390,

Black, calved May 22, 1933 ; breeder, The Duke of Bedford, K.G. ;

Sire, Woburn Perfection 13th 355,

Dam, Poynetts Iona 672.

Register of the Polled Herds.

THE BAWDESWELL HERD.

Owner—MAJOR QUINTIN E. GURNEY,
Bawdeswell Hall, Norfolk.

BULLS.

BAWDESWELL CHARTIST 609,

White with black points, calved December 2, 1934; breeder,
Major Q. E. Gurney;
Sire, Woodbastwick Jacob 573,
Dam, Bawdeswell Charmer 1502.

BAWDESWELL CITIZEN 611,

White with black points, calved May 27, 1934; breeder, Major
Q. E. Gurney;
Sire, Bawdeswell Snowburn 537,
Dam, Bawdeswell Catmint 1204.

BAWDESWELL DICTATOR 613,

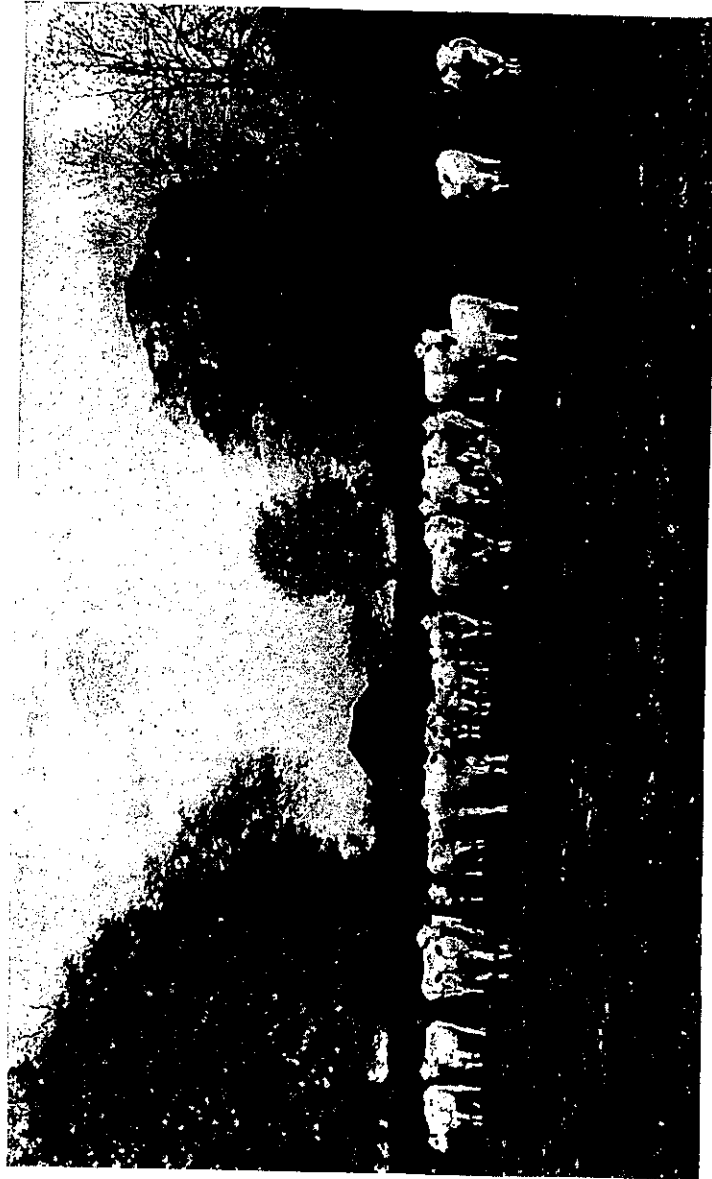
White with black points, calved March 19, 1934; breeder, Major
Q. E. Gurney;
Sire, Hemblington Jovial 473,
Dam, Bawdeswell Diver 1822.

BAWDESWELL SPINDRIFT 615,

White with black points, calved August 24, 1933; breeder, Major
Q. E. Gurney;
Sire, Hemblington Jovial 473,
Dam, Bawdeswell Spinet 1846.

BAWDESWELL SPINNAKER 617,

White with black points, calved October 10, 1934; breeder, Major
Q. E. Gurney;
Sire, Bawdeswell Count 2nd 531,
Dam, Bawdeswell Spinet 1846.



PART OF THE HERD AT BAWDESWELL, OWNED BY MAJOR Q. E. GURNEY.

BAWDESWELL SWAN 619,

White with black points, calved December 20, 1933; breeder, Major
Q. E. Gurney;
Sire, Hemblington Jovial 473,
Dam, Bawdeswell Swansong 1854.

BAWDESWELL TAURUS 621,

White with black points, calved April 25, 1934; breeder, Major
Q. E. Gurney;
Sire, Giffords Peeler 553,
Dam, Bawdeswell Topknot 2146.

COWS.

BAWDESWELL ADELE 2392,

White with black points, calved May 18, 1933; breeder, Major
Q. E. Gurney;
Sire, Hemblington Jovial 473,
Dam, Bawdeswell Ada 1796 I.F.S.,

BAWDESWELL ALBA 2394,

White with black points, calved September 24, 1934; breeder,
Major Q. E. Gurney;
Sire, Woburn Matthias 11th 345,
Dam, Bawdeswell Albion 2084.

BAWDESWELL BLACK DIAMOND 2396.

White with black points, calved October 23, 1934; breeder, Major
Q. E. Gurney;
Sire, Bawdeswell Count 2nd 531,
Dam, Hemblington Black Queen 2198.

BAWDESWELL BLACK PEARL 2398,

White with black points, calved December 13, 1933; breeder, Major
Q. E. Gurney;
Sire Woodbastwick Jacob 573
Dam, Hemblington Black Queen 2198.

BAWDESWELL BUNTY 2400,

White with black points, calved February 28, 1934; breeder,
Major Q. E. Gurney;
Sire, Giffords Peeler 553,
Dam, Bolwick Beauty 2150.

BAWDESWELL CATSPAW 2402,

White with black points, calved January 27, 1934; breeder, Major
Q. E. Gurney;
Sire, Bawdeswell Eland 463,
Dam, Bawdeswell Conference 928.

BAWDESWELL CHARLOTTE 2404,

White with black points, calved March 22, 1933; breeder, Major
Q. E. Gurney;
Sire, Woburn Matthias 11th 345,
Dam, Bawdeswell Charmer 1502.

BAWDESWELL CHRISTIE 2406,

White with black points, calved January 23, 1934; breeder, Major
Q. E. Gurney;
Sire, Woburn Matthias 11th 345,
Dam, Bawdeswell Counterfoil 1814.

BAWDESWELL CLOUDBURST 2408,

White with black points, calved October 12, 1934; breeder, Major
Q. E. Gurney;
Sire, Woburn Matthias 11th 345,
Dam, Bawdeswell Cloud 1810.

BAWDESWELL CLOUDLESS 2410,

White with black points, calved March 29, 1933; breeder, Major
Q. E. Gurney;
Sire, Hemblington Jovial 473,
Dam, Bawdeswell Cloud 1810.

BAWDESWELL COUNTESS 3rd 2412,

White with black points, calved August 16, 1934; breeder, Major
Q. E. Gurney;
Sire, Woodbastwick Jacob 573,
Dam, Bawdeswell Counterpane 2112.

BAWDESWELL COURAGE 2nd 2414,

White with black points, calved July 7, 1933; breeder, Major
Q. E. Gurney;
Sire, Hemblington Jovial 473,
Dam, Bawdeswell Cowslip 1818.

BAWDESWELL COTTA 2416,

White with black points, calved November 21, 1934; breeder, Major
Q. E. Gurney;
Sire, Woodbastwick Jacob 573,
Dam, Bawdeswell Condor 2106.

BAWDESWELL CRISP 2418,

White with black points, calved July 3, 1934; breeder, Major
Q. E. Gurney;
Sire, Giffords Peeler 553,
Dam, Bawdeswell Constance 1812.

BAWDESWELL CYRENE 2420,

White with black points, calved February 6, 1934; breeder, Major
Q. E. Gurney;
Sire, Hemblington Jovial 473,
Dam, Bawdeswell Cissie 2104.

BAWDESWELL DIANA 2424,

White with black points, calved May 11, 1933; breeder, Major
Q. E. Gurney;
Sire, Hemblington Jovial 473,
Dam, Bawdeswell Diver 1822.

BAWDESWELL DAFFODIL 2422,

White with black points, calved May 12, 1934; breeder, Major
Q. E. Gurney;
Sire, Giffords Peeler 553,
Dam, Bawdeswell Dodo 2124.

BAWDESWELL DOVE 2nd 2426,

White with black points, calved December 1, 1934; breeder, Major
Q. E. Gurney;
Sire, Bawdeswell Count 2nd 531,
Dam, Bawdeswell Dragonfly 1824.

BAWDESWELL GERANIUM 2428,

White with black points, calved February 21, 1934; breeder, Major
Q. E. Gurney;
Sire, Hemblington Jovial 473,
Dam, Sedgemere Gentle 1972 I.F.S.

BAWDESWELL IBEX 2430,

White with black points, calved December 15, 1934; breeder, Major
Q. E. Gurney;
Sire, Bawdeswell Count 2nd 531,
Dam, Bawdeswell Ivy 1834 I.F.S.

BAWDESWELL IBIS 2432,

White with black points, calved February 8, 1934; breeder, Major
Q. E. Gurney;
Sire, Bawdeswell Eland 463,
Dam, Bawdeswell Ivy 1834 I.F.S.

BAWDESWELL KITTIWAKE 2434,

White with black points, calved December 18, 1933; breeder, Major
Q. E. Gurney;
Sire, Hemblington Jovial 473,
Dam, Bawdeswell Kitty 2128 I.F.S.

BAWDESWELL MARTHA 2436,

White with red points, calved September 12, 1934; breeder, Major
Q. E. Gurney;
Sire, Woodbastwick Jacob 573,
Dam, Bawdeswell Minnie 2132 I.F.S.

BAWDESWELL MATTIE 2438 I.F.S.,

White with black points, calved February 11, 1933; breeder, Major
Q. E. Gurney;
Sire, Faygate King Saul 469 I.F.S.,
Dam, M.

BAWDESWELL MIST 2440,

White with black points, calved September 15, 1933; breeder, Major
Q. E. Gurney;
Sire, Hemblington Jovial 473,
Dam, Bawdeswell Minnie 2132 I.F.S.

BAWDESWELL NADINE 2442 I.F.S.,

White with black points, calved January 25, 1933; breeder, Major
Q. E. Gurney;
Sire, Faygate King Saul 469 I.F.S.,
Dam, N.

BAWDESWELL PANSY 2444,

White with black points, calved January 19, 1933; breeder, Major
Q. E. Gurney;
Sire, Bawdeswell Catfish 369,
Dam, Bawdeswell Phyllis 3rd 1838.

BAWDESWELL PATSY 2446,

White with red points, calved August 19, 1934; breeder, Major
Q. E. Gurney;
Sire, Bawdeswell Count 2nd 531,
Dam, Bawdeswell Phyllis 3rd 1838.

BAWDESWELL QUICKSILVER 2448,

White with black points, calved December 2, 1934; breeder, Major
Q. E. Gurney;
Sire, Giffords Peeler 553,
Dam, Bawdeswell Queenie 2136.

BAWDESWELL SPOOK 2nd 2450,

White with black points, calved September 26, 1933; breeder, Major
Q. E. Gurney;
Sire, Hamblington Jovial 473,
Dam, Bawdeswell Spool 1848.

BAWDESWELL SPOONBILL 2452,

White with black points, calved October 4, 1934; breeder, Major
Q. E. Gurney;
Sire, Woodbastwick Jacob 473,
Dam, Bawdeswell Spool 1848.

BAWDESWELL SUGARCAKE 2454,

White with red points, calved December 25, 1933; breeder, Major
Q. E. Gurney;
Sire, Bawdeswell Eldon 535,
Dam, Bawdeswell Sugarloaf 2149.

THE BOLWICK HERD.

Owners—WALTER BUXTON and C. R. BIRKBECK,
Horstead House, Norwich.

BULLS.**BOLWICK CAPTAIN 623,**

White with black points, calved May 23, 1934; breeders, Buxton
and Birkbeck;
Sire, Bolwick Hermes 539,
Dam, Bawdeswell Courage 1508.

BOLWICK FIREFLY 625,

White with black points, calved December 1, 1933; breeders,
Buxton and Birkbeck;
Sire, St. Osyth Friar 395,
Dam, Giffords Phyllis 1912 I.F.S.

BOLWICK PIRATE 627,

White with black points, calved February 18, 1934; breeders,
Buxton and Birkbeck;
Sire, Bolwick Hermes 539,
Dam, Buxton Prudence 1540.

BOLWICK STARLIGHT 629,

White with black points, calved June 9, 1934; breeders Buxton
and Birkbeck;
Sire, Bolwick Hermes 539,
Dam, Bawdeswell Sundart 2142.

COWS.**BOLWICK DELAY 2456,**

White with red points, calved February 14, 1933; breeders, Buxton
and Birkbeck;
Sire, Bawdeswell Constable 373,
Dam, Bolwick Dally 1858.

BOLWICK DELILAH 2458,

White with black points, calved April 10, 1933; breeders, Buxton and Birkbeck;

Sire, Bolwick Lion 541,

Dam, Bolwick Dilly 1864.

BOLWICK PATIENCE 2460,

White with black points, calved June 25, 1933; breeders, Buxton and Birkbeck;

Sire, Bawdeswell Constable 373,

Dam, Bawdeswell Phoebe 1228.

BOLWICK POLLY 2462,

White with black points, calved November 2, 1934; breeders, Buxton and Birkbeck;

Sire, Bolwick Hermes 539,

Dam, Giffords Phyllis 1912 I.F.S.

BOLWICK SALLY 2464,

White with black points, calved March 21, 1934; breeders, Buxton and Birkbeck;

Sire, Bolwick Hermes 539,

Dam, Sedgemere Syringa 1978.

BOLWICK WALNUT 2466,

White with black points, calved March 1, 1933; breeders, Buxton and Birkbeck;

Sire, Bawdeswell Constable 373,

Dam, Kelmarsh Wallflower 7th 1612.

BOLWICK WANDERER 2468,

White with black points, calved November 2, 1933; breeders, Buxton and Birkbeck;

Sire, St. Osyth Friar 395,

Dam, Giffords Whimper 1924.

BOLWICK WINNIE 2470,

White with black points, calved February 13, 1934; breeders, Buxton and Birkbeck;

Sire, Bolwick Hermes 539,

Dam, Kelmarsh Wallflower 7th 1612.

THE FAYGATE HERD.

Owner—SIR CLAUD ALEXANDER, Bart.,

Faygate Wood, Sussex.

BULL.

FAYGATE SINGER 631,

White with black points, calved August 27, 1934; breeder Sir Claud Alexander, Bart.;

Sire, Bolwick Snowman 545,

Dam, Faygate Lyric 1732.

THE KELMARSH HERD.

Owner—CAPTAIN C. G. LANCASTER,

Kelmarsh Hall, Northampton.

COWS.

KELMARSH ELLA 4th 2472,

White with black points, calved July 10, 1933; breeder, Captain C. G. Lancaster;

Sire, St. Osyth Bard 251,

Dam, Bawdeswell Ella II. 940,

KELMARSH FUCHSIA 6th 2474,

White with black points, calved July 14, 1933; breeder, Captain C. G. Lancaster;

Sire, St. Osyth Bard 251,

Dam, Kelmarsh Fuchsia II. 552.

KELMARSH PANSY 5th 2476,

White with black points, calved December 5, 1933; breeder, Captain C. G. Lancaster;

Sire, St. Osyth Bard 251,

Dam, Kelmarsh Pansy III. 996.

KELMARSH PRIMROSE 8th 2478,

White with black points, calved December 28, 1934; breeder, Captain C. G. Lancaster;

Sire, Kelmarsh Eager 561,

Dam, Kelmarsh Primrose III. 1000.

KELMARSH SNOWDROP 9th 2480,

White with black points, calved July 14, 1933; breeder, Captain C. G. Lancaster;

Sire, St. Osyth Bard 251,

Dam, Kelmarsh Snowdrop 7th 1946.

KELMARSH SNOWDROP 10th 2482,

White with black points, calved October 25, 1933; breeder, Captain C. G. Lancaster;

Sire, St. Osyth Bard 251,

Dam, Kelmarsh Snowdrop 8th 1948.

THE LITTLESTOKE HERD.

Owner—N. B. DUCKER,

Littlestoke Manor, North Stoke, Oxford.

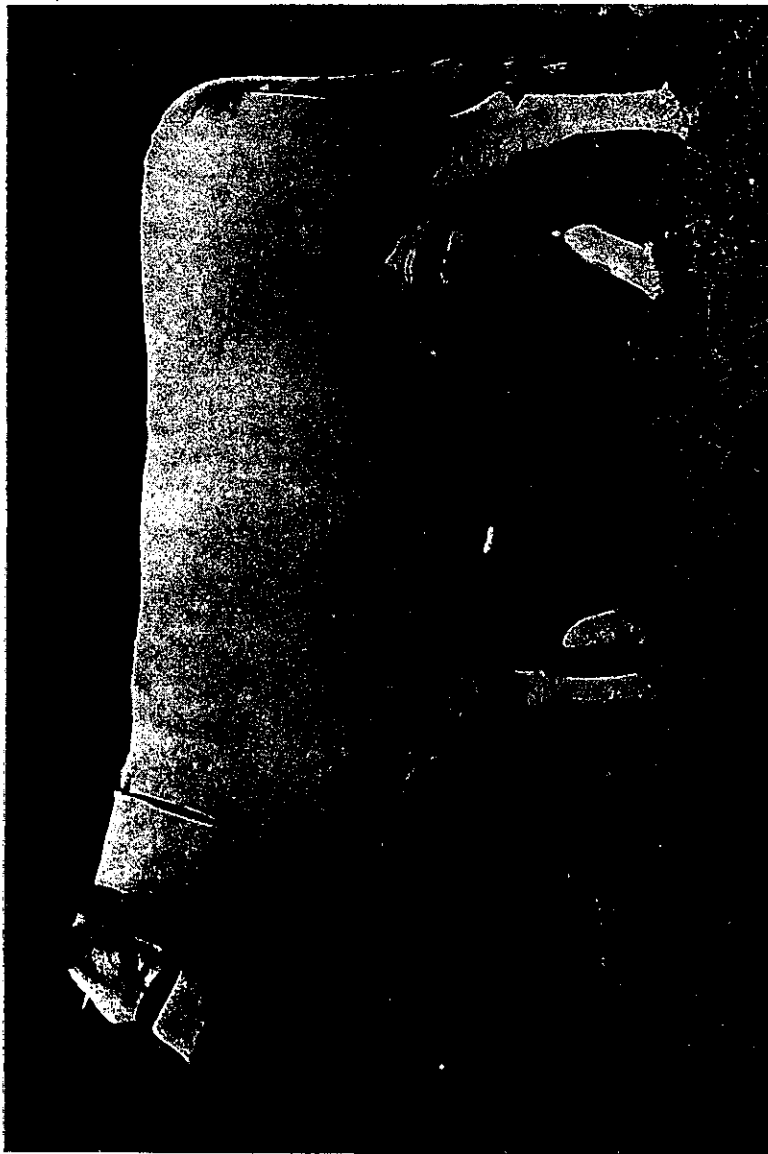
COW.

LITTLESTOKE SNOW SAUCE 2484,

White with black points, calved July 12, 1934; breeder, Sir Claud
Alexander, Bart. ;

Sire, Bolwick Snowman 545,

Dam, Faygate Saucy 1546.



GIFFORDS TOPLADY 1566.
1st R.A.S.E. (Ipswich), 1934.
Owner: CAPTAIN H. J. CATOR, M.C.

THE RANWORTH HERD.

Owner—CAPTAIN H. J. CATOR, M.C.,
Ranworth Hall, Norwich.

COWS.

RANWORTH BEETLE 2486,

White with black points, calved January 21, 1934; breeder, John Cator;

Sire, Woodbastwick Robin Hood 491,
Dam, Woodbastwick Lady Bird 2302.

RANWORTH JUNIPER 2488, ✓

White with black points, calved May 9, 1933; breeder, Captain H. J. Cator, M.C.;

Sire, Ranworth Janitor 479,
Dam, Ranworth Junkling 1616.

RANWORTH MINGE PIE 2490,

White with black points, calved June 7, 1933; breeder, Captain H. J. Cator, M.C.;

Sire, Ranworth Janitor 479,
Dam, Bolwick Mistletoe 1534.

RANWORTH PEAHEN 2492,

White with black points, calved February 14, 1934; breeder, John Cator;

Sire, Woodbastwick Robin Hood 491,
Dam, Woodbastwick Bird's-Eye 1982.

THE ST. OSYTH HERD.

Owner—BRIGADIER-GENERAL KENNETH KINCAID
SMITH, C.B., C.M.G., D.S.O.,

St. Osyth's Priory, Clacton-on-Sea.

BULL.

ST. OSYTH LEX 633,

White with black points, calved January 17, 1933; breeder,
Brigadier-General K. Kincaid Smith, C.B.;
Sire, St. Osyth Friar 395,
Dam, St. Osyth Daisy 1328.

COW.

ST. OSYTH LADY 2494,

White with black points, calved December 2, 1933; breeder,
Brigadier-General K. Kincaid Smith, C.B.;
Sire, Giffords Pundit 555,
Dam, St. Osyth Daisy 1328.

ST. OSYTH LARKSPUR 2496 (*Twin to a heifer*),

White with black points, calved November 28, 1933; breeder,
Brigadier-General K. Kincaid Smith, C.B.;
Sire, Giffords Pundit 555,
Dam, St. Osyth Emerald 1340.

ST. OSYTH LASSIE 2498,

White with black points, calved March 28, 1933; breeder, Brigadier-
General K. Kincaid Smith, C.B.;
Sire, Giffords Pundit 555,
Dam, St. Osyth Dolly 1334.

ST. OSYTH LAURA 2500,

White with black points, calved August 2, 1933; breeder, Brigadier-
General K. Kincaid Smith, C.B.;
Sire, Giffords Pundit 555,
Dam, St. Osyth Dora 1336.

ST. OSYTH LAVENDAR 2502,

White with black points, calved November 6, 1933; breeder,
Brigadier-General K. Kincaid Smith, C.B.;

Sire, Giffords Pundit 555,

Dam, St. Osyth Jean 2262.

ST. OSYTH LENA 2504,

White with black points, calved October 10, 1933; breeder,
Brigadier-General K. Kincaid Smith, C.B.;

Sire, Giffords Pundit 555,

Dam, St. Osyth Arizona 1008.

ST. OSYTH LILY 2506,

White with black points, calved January 26, 1933; breeder,
Brigadier-General K. Kincaid Smith, C.B.;

Sire, Giffords Pundit 555,

Dam, St. Osyth Irene 1968.

ST. OSYTH LIZZIE 2508,

White with black points, calved September 6, 1933; breeder,
Brigadier-General K. Kincaid Smith, C.B.;

Sire, Giffords Pundit 555,

Dam, St. Osyth Jonquil 2nd 2266.

ST. OSYTH LOBELIA 2510 (*Twin to a heifer*),

White with black points, calved November 28, 1933; breeder,
Brigadier-General K. Kincaid Smith, C.B.;

Sire, Giffords Pundit 555,

Dam, St. Osyth Emerald 1340.

ST. OSYTH LYDIA 2512,

White with black points, calved October 5, 1933; breeder,
Brigadier-General K. Kincaid Smith, C.B.;

Sire, Giffords Pundit 555,

Dam, St. Osyth Janet 2260.

ST. OSTYH MARY 2514,

White with black points, calved January 23, 1934; breeder,
Brigadier-General K. Kincaid Smith, C.B.;

Sire, Giffords Pundit 555,

Dam, St. Osyth Irene 1968.

ST. OSYTH MOLLY 2516,

White with black points, calved October 2, 1934; breeder, Brigadier-
General K. Kincaid Smith, C.B.;

Sire, Giffords Pundit 555,

Dam, St. Osyth Janet 2260.

THE WOODBASTWICK HERD.

Owner—JOHN CATOR,
Woodbastwick Hall, Norwich.

BULLS.

WOODBASTWICK CHORISTER 635,

White with black points, calved July 4, 1933; breeder, John Cator;
Sire, Woodbastwick Robin Hood 491,
Dam, Woodbastwick Blackbird 3rd 1650.

WOODBASTWICK JOSEPH 637,

White with black points, calved January 9, 1934; breeder, John Cator;
Sire, Woodbastwick Robin Hood 491,
Dam, Woodbastwick Josephine 2292.

COWS.

WOODBASTWICK BEGUM 2518,

White with black points, calved December 25, 1933; breeder, John Cator;
Sire, Woodbastwick Robin Hood 491,
Dam, Woodbastwick Black Gown 2nd 1654.

WOODBASTWICK BIRDLIME 2nd 2520,

White with black points, calved June 16, 1934; breeder, John Cator;
Sire, Woodbastwick Robin Hood 491,
Dam, Woodbastwick Bird Lime 2280.

WOODBASTWICK BLACK CAP 4th 2522,

White with black points, calved May 3, 1934; breeder, John Cator;
Sire, Woodbastwick Robin Hood 491,
Dam, Woodbastwick Black Cap 800.

WOODBASTWICK JETSAM 2524,

White with black points, calved September 7, 1933; breeder,
John Cator;

Sire, Woodbastwick Robin Hood 491,
Dam, Woodbastwick Jestine 2nd 1990.

WOODBASTWICK JEWEL 2526,

White with black points, calved June 8, 1934; breeder, John
Cator;

Sire, Woodbastwick Robin Hood 491,
Dam, Woodbastwick Jestine 3rd 1992.

WOODBASTWICK JOYCE 5th 2528,

White with black points, calved August 15, 1933; breeder, John
Cator;

Sire, Woodbastwick Robin Hood 491,
Dam, Woodbastwick Joyce 812.

WOODBASTWICK JUNO 2530,

White with black points, calved June 13, 1933; breeder, John
Cator;

Sire, Woodbastwick Robin Hood 491,
Dam, Woodbastwick Joyce 2nd 1664.

Grading-up Register

of animals partly of Herd Book registered Park Cattle blood.

SECTION A.**COWS.****BOLWICK NORAH A.46 G.U.R. Polled,**

White with black points, calved October 17, 1934; breeders and
owners, Buxton and Birkbeck;

Sire, Bolwick Hermes 539,
Dam, Nancy, a Shorthorn cow.

WOODBASTWICK MERRY MAID A.48 G.U.R. Polled,

White with black points, calved July 26, 1934; breeder and owner,
John Cator;

Sire, Bapton Clipper Royal, a white Shorthorn bull,
Dam, Woodbastwick Jestine 2nd 1990.

SECTION B.**BOLWICK DAFFODIL B.8 G.U.R. Polled,**

Black and white, calved June 15, 1933; breeders and owners,
Buxton and Birkbeck;

Sire, Bolwick Lion 541,
Dam, Bolwick Daystar A.2 G.U.R.

RANWORTH SNOWFLAKE B.10 G.U.R. Polled,

White with black points, calved June 10, 1934; breeder and owner,
Captain H. J. Cator, M.C.;

Sire, Ranworth Janitor 479,
Dam, Ranworth Snowdrop A.44 G.U.R.

PREFIXES GRANTED BY THE PARK CATTLE SOCIETY.

Ampthill	Wingfield, A. H.
Bawdeswell	Gurney, Major Q. E.
Bolwick	Walter Buxton and C. R. Birkbeck.
Cadzow	Hamilton, The Duke of
Chillingham	Tankerville, The Earl of
Dynevor	Dynevor, The Lord
Faygate	Alexander, Sir Claud, Bart.
Kelmarsh	Lancaster, Captain C. G.
Littlestoke	Ducker, N. B.
Massingham	Birkbeck, Lt.-Colonel Oliver
Ranworth	Cator, Captain H. J., M.C.
St. Osyth	Kincaid Smith, Brigadier-General K., C.B., C.M.G., D.S.O.
Sedgemere	Woodiwiss, Sam.
Solva	Howell, Captain J. H., M.C.
Vaynol	Assheton-Smith, Sir Michael, Bart.
Woburn	Bedford, The Duke of, K.G.
Woodbastwick	Cator, John.

AWARDS AT SHOWS.

1933.

ESSEX (Rochford). Judge: A. J. Youngs.

Owner.

Bulls ... Calved in 1931 or previously.

- 1 Woburn Pykentigern I. 281 The Duke of Bedford, K.G.
- 2 Bolwick Hermes 539 ... Buxton and Birkbeck.

Bulls ... Calved in 1932.

- 1 Woodbastwick Forester 571 John Cator.
- 2 Woburn Matthias 28th 505 The Duke of Bedford, K.G.

Cows ... Calved in 1930 or previously.

- 1 Poynetts Juno 688 ... The Duke of Bedford, K.G.
- 2 Woodbastwick Black Gown
2nd 1654 ... John Cator.
- 3 Bawdeswell Charmer 1502... Major Q. E. Gurney.

Heifers Calved in 1931.

- 1 Woburn Pyar 2074 ... The Duke of Bedford, K.G.
- 2 Giffords Una 2196 ... Buxton and Birkbeck.
- 3 Bawdeswell Destiny 2118 ... Major Q. E. Gurney.

Heifers Calved in 1932.

- 1 Horstead Lavender 2208 ... Buxton and Birkbeck
- 2 St. Osyth Kimono 2274 ... Brig.-Gen. K. Kincaid
Smith, C.B.
- 3 Woodbastwick Joyce 4th
2298 ... John Cator.

Group of Three Animals (1 Bull and 2 Cows or Heifers).

- 1 The Duke of Bedford, K.G.
- 2 Buxton and Birkbeck.

1933.

ROYAL NORFOLK (Kings Lynn). Judge: Sam Woodiwiss.

Bulls ... 1 Woburn Pykentigern I. 281 The Duke of Bedford, K.G.
2 Woodbastwick Forrester 571 John Cator.

Cows ... Calved in 1930 or previously.

1 Poynetts Juno 688 ... The Duke of Bedford, K.G.
2 Woodbastwick Black Gown
2nd 1654 ... John Cator.

Heifers Calved in 1931 or 1932.

1 Woburn Pyar 2074 ... The Duke of Bedford, K.G.
2 Horstead Lavendar 2208 ... Buxton and Birkbeck.

Special Prize Best Park Cow or Heifer.

Poynetts Juno 688 ... The Duke of Bedford, K.G.

1934.

R.A.S.E. (Ipswich). Judge; Sam Woodiwiss.

Owner.

Bulls ... Calved in 1932 or previously.

1 Woburn Matthias 28th 505 The Duke of Bedford, K.G.
2 Woburn Pykentigern 1st 281 The Duke of Bedford, K.G.
3 Bolwick Hermes 539 ... Buxton and Birkbeck.

Bulls ... Calved in 1933.

1 St. Osyth Lex 633 ... Brig.-Gen. K. Kincaid
Smith, C.B.
2 Bawdeswell Swan 619 ... Major Q. E. Gurney.

Cows ... Calved in 1931 or previously.

1 Giffords Toplady 1566 ... Captain H. J. Cator, M.C.
2 Woodbastwick Black Pearl
4th 1658 ... John Cator.
3 St. Osyth Emerald 1340 ... Brig.-Gen. K. Kincaid
Smith, C.B.

Heifers Calved in 1932.

1 Woodbastwick Juliet 2300... John Cator.
2 Bawdeswell Condor 2106 ... Major Q. E. Gurney.
3 Bawdeswell Crinoline 2114 Major Q. E. Gurney.

Heifers Calved in 1933.

1 Woodbastwick Joyce 5th
2528... ... John Cator
2 Bawdeswell Pansy 2444 ... Major Q. E. Gurney.
3 St. Osyth Lassie 2498 ... Brig.-Gen. K. Kincaid-
Smith C.B.

1933.

NORFOLK AND NORWICH FAT CATTLE SHOW.

Park Steer or Heifer not exceeding 3 years old.

1 Jangle, 1 year 4 months ... Captain H. J. Cator, M.C.
(10 cwt. 3 qrs. 17 lbs.)
2 Maggie 1 year 10 months ... Buxton and Birkbeck
(10 cwt. 1 qr. 14 lbs.)
3 Jungle, 2 years ... Captain H. J. Cator, M.C.
(10 cwt.)

1934.

NORFOLK AND NORWICH FAT CATTLE SHOW.

Park Steer or Heifer, not exceeding 3 years old.

1 James, 1 year 6 months ... Captain H. J. Cator, M.C.
(11 cwt. 2 qrs. 8 lbs.)
2 Crescent, 2 years 10 months Major Q. E. Gurney.
(15 cwt. 2 qrs. 1 lbs.)
3 Jock, 2 years 4 months ... Captain H. J. Cator, M.C.
(11 cwt. 1 qr. 13 lbs.)

